

General Information (Origin of Request)		
<input type="checkbox"/> User Requirements Document (URD) <input checked="" type="checkbox"/> User Detailed Functional Specification (UDFS) <input checked="" type="checkbox"/> User Handbook (UHB) <input type="checkbox"/> Other User Functional or Technical Documentation (SYS)		
Request raised by: 4CB	Institute: 4CB	Date raised:
Request title: Multiplex Editorial Change Request on UDFS v3.0, UHB v3.0 and CLM/RTGS UHB version T2 R2023.JUN		Request ref. no: CSLD-0109-SYS
Request type: Common		
1. Legal/business importance parameter:	2. Market implementation efforts parameter – Stakeholder impact:	
3. Operational impact:	4. Financial impact parameter:	
5. Functional/ Technical impact:	6. Interoperability impact:	
Requestor Category:	Status: Approved	

Description of requested change:

Editorial changes regarding Central Liquidity Management UDFS v3.0, Real-Time Gross Settlement UDFS v3.0, Central Liquidity Management UHB version T2 R2023.JUN, Common Reference Data Management UHB v3.0, Real-Time Gross Settlement UHB version T2 R2023.JUN, MyStandards Usage Guidelines and MyStandards Examples.

Reason for change and expected benefits/business motivation:

The editorial changes listed below are related to the Central Liquidity Management UDFS v3.0, Real-Time Gross Settlement UDFS v3.0, Central Liquidity Management UHB version T2 R2023.JUN, Common Reference Data Management UHB v3.0, Real-Time Gross Settlement UHB version T2 R2023.JUN. Their incorporation into the UDFS v3.0 and UHB v3.0/version T2 R2023.JUN is required for clarifying the documentation underlying the software. Please note that the changes referring to UDFS v3.0 and UHB v3.0/version T2 R2023.JUN will also be reflected, when relevant, into the schema documentation published in MyStandards.

CLM UDFS	5
1 EUROSISTEM UPDATE [SDD-CN-PBR-067]: page 46 (CLM UDFS chapter 3.2.1 Account types)	5
2 EUROSISTEM UPDATE [internal review]: page 55 (CLM UDFS chapter 3.2.5 Blocking/unblocking account)	6
3 EUROSISTEM UPDATE [internal review]: page 68 (CLM UDFS chapter 3.5 Shared reference data)	6
4 EUROSISTEM UPDATE [internal review]: page 68 (CLM UDFS chapter 4.1 T2 calendar)	7
5 EUROSISTEM UPDATE [internal review]: page 70 (CLM UDFS chapter 4.2 CLM schedule)	7
6 EUROSISTEM UPDATE [internal review]: page 72 (CLM UDFS chapter 4.3 Overview description of the business day)	7
7 EUROSISTEM UPDATE [internal review]: page 71 (CLM UDFS chapter 4.3 Overview description of the business day)	11
8 EUROSISTEM UPDATE [internal review]: page 79 (CLM UDFS chapter 4.4.2.1 Settlement window for CBOs)	12
9 EUROSISTEM UPDATE [internal review]: page 80 (CLM UDFS chapter 4.4.2.2 Settlement window for liquidity transfer orders)	12

10	EUROSYSTEM UPDATE [internal review]: page 83 (CLM UDFS chapter 4.4.4 End-of-day period (18:00 - 18:45 CET)).....	12
11	EUROSYSTEM UPDATE [ECB JIRA CSLD-1368]: page 101 (CLM UDFS chapter 5.3.7 Revocation of payment orders).....	13
12	EUROSYSTEM UPDATE [internal review]: page 122 (CLM UDFS chapter 5.4.2.1 Overview).....	13
13	EUROSYSTEM UPDATE [internal review]: page 143 (CLM UDFS chapter 5.6.3.1 Overview).....	14
14	EUROSYSTEM UPDATE [ECB JIRA CSLD-1368]: page 207 (CLM UDFS chapter 9.4.1 Description)	14
15	EUROSYSTEM UPDATE [internal review]: page 255 (CLM UDFS chapter 9.20.1 Description).....	14
16	EUROSYSTEM UPDATE [internal review]: page 258 (CLM UDFS chapter 9.21 Process cross-CB turnover)	17
17	EUROSYSTEM UPDATE [internal review]: page 261 (CLM UDFS chapter 9.22.2 Process business day event "Start of CLM RTS")	18
18	UPDATE [internal review]: page 263 (CLM UDFS chapter 9.22.3 Process business day event "Cut-off for CLM RTS")	19
19	UPDATE [internal review]: page 263 (CLM UDFS new chapter 9.22.4 Process business day event "Start of EoD processing")	20
20	UPDATE [internal review]: page 263 (CLM UDFS restructured chapter 9.22.5 Process business day event "Start of EoD processing").....	20
21	EUROSYSTEM UPDATE [SDD-PBR-072]: page 310 (CLM UDFS chapter 11.1.3.1 Technical validation)	23
22	EUROSYSTEM UPDATE [ECB JIRA CSLD-1368]: page 325 (CLM UDFS chapter 11.4 Message References)	23
23	EUROSYSTEM UPDATE [SDD-PBR-073]: pages 401-402 (CLM UDFS chapter 12.2.3.3 the message in business context); page 417 (CLM UDFS chapter 12.2.4.3 the message in business context).....	25
24	EUROSYSTEM UPDATE [Internal Review]: pages 445 and 449 (CLM UDFS chapter 12.2.6.3 the message in business context)	26
25	EUROSYSTEM UPDATE [SDD-PBR-073]: pages 486-487 (CLM UDFS chapter 12.2.13.3 the message in business context); page 497-498 (CLM UDFS chapter 12.2.14.3 the message in business context).....	26
26	EUROSYSTEM UPDATE [Internal Review]: page 601 (CLM UDFS chapter 13.4.2.2 Schema)	27
27	EUROSYSTEM UPDATE [Internal Review]: page 611 (CLM UDFS chapter 13.4.3.2 Schema)	27
28	EUROSYSTEM UPDATE [Internal Review]: page 616 (CLM UDFS chapter 13.4.3.3 The message in business context)	28
29	EUROSYSTEM UPDATE [Internal Review]: page 627 (CLM UDFS chapter 14.2 Index of validation rules and error codes)	28
30	EUROSYSTEM UPDATE [SDD-PBR-074]: page 746+755/756 (CLM UDFS chapter 14.2 Index of validation rules and error codes)	28

RTGS UDFS.....	31
31 EUROSYSYSTEM UPDATE [internal review]	31
32 EUROSYSYSTEM UPDATE [SDD-CN-PBR-067]: page 58 (RTGS UDFS chapter 3.2.1 Account types).....	31
33 EUROSYSYSTEM UPDATE [ECB JIRA DKK-83]: page 71 (RTGS UDFS chapter 3.4 Shared reference data)	32
34 EUROSYSYSTEM UPDATE [internal review]: page 71 (RTGS UDFS chapter 3.4 Shared reference data)	33
35 EUROSYSYSTEM UPDATE [internal review]: page 76 (RTGS UDFS chapter 4.2 RTGS schedule).....	33
36 EUROSYSYSTEM UPDATE [internal review]: page 81 (RTGS UDFS chapter 4.4.1 Start-of-day period (18:45 – 19:30 CET)).....	34
37 EUROSYSYSTEM UPDATE [internal review]: page 84 (RTGS UDFS chapter 4.4.2.2 Settlement window for liquidity transfer orders)	34
38 EUROSYSYSTEM UPDATE [internal review]: page 85 (RTGS UDFS chapter 4.4.3 Maintenance window)	34
39 EUROSYSYSTEM UPDATE [internal review]: page 90 (RTGS UDFS chapter 4.4.5 End-of-day period (18:00 – 18:45 CET)).....	35
40 EUROSYSYSTEM UPDATE [ECB JIRA CSLD-1368]: page 116 (RTGS UDFS chapter 5.3.8 Payment order revocation and payment recall)	35
41 EUROSYSYSTEM UPDATE [internal review]: page 214 (RTGS UDFS chapter 5.5.3.5 Rule-based liquidity transfers due to queued payment orders or AS transfer orders).....	35
42 EUROSYSYSTEM UPDATE [ECB JIRA CSLD-1368]: page 270 (RTGS UDFS chapter 9.4.1 Description)	35
43 EUROSYSYSTEM UPDATE [SDD-PBR-072]: page 390 (CLM UDFS chapter 11.1.3.1 Technical validation)	36
44 EUROSYSYSTEM UPDATE [ECB JIRA CSLD-1368]: page 406 (RTGS UDFS chapter 11.4 Message References).....	36
45 EUROSYSYSTEM UPDATE [BBK JIRA CSLD-40682]: pages 430 and 432 (RTGS UDFS chapter 11.5 Business scenarios);.....	37
46 EUROSYSYSTEM UPDATE [SDD-PBR-073]: pages 509-510 (RTGS UDFS chapter 12.2.3.3 the message in business context); pages 527-528 (RTGS UDFS chapter 12.2.4.3 the message in business context); page 641 (RTGS UDFS chapter 12.2.20.3 the message in business context); page 652-654 (RTGS UDFS chapter 12.2.21.3 the message in business context);	38
47 EUROSYSYSTEM UPDATE [BBK JIRA CSLD-40682]: page 587 and 591 (RTGS UDFS chapter 12.2.12.3 the message in business Context)	40
48 EUROSYSYSTEM UPDATE [internal review]: page 700ff (RTGS UDFS chapter 12.2.21.3 the message in business Context).....	41
49 EUROSYSYSTEM UPDATE [SDD-PBR-069]: page 710 (RTGS UDFS chapter 12.2.22.3 the message in business Context).....	43
CLM UHB	44

50	EUROSYSTEM UPDATE [SDD-CN-PBR-060]: page 167 (CLM UHB chapter 5.1.22 Statement of Account – Download Screen)	44
51	EUROSYSTEM UPDATE [SDD-CN-PBR-060]: page 477 (CLM UHB chapter 6.1.14 Download statement of account)	45
	CRDM UHB	46
52	EUROSYSTEM UPDATE [Internal review]: page 33 (CRDM UHB-chapter 1.2.2.1.2 Privilege).....	46
53	EUROSYSTEM UPDATE [Internal review]: page 72 (CRDM UHB-chapter 2.3.1.3 Party – New/Edit Screen).....	56
54	EUROSYSTEM UPDATE [Internal review]: page 133 (CRDM UHB-chapter 2.3.2.4 Limits – Search/List Screen)	57
55	EUROSYSTEM UPDATE [Internal review]: page 199 (CRDM UHB-chapter 2.3.3.15 Grant/Revoke Role – New/Edit Screen)	57
56	EUROSYSTEM UPDATE [Internal review]: page 390 (CRDM UHB-chapter 2.4.2.9 Billing Group – Search/List Screen)	58
	RTGS UHB.....	60
57	EUROSYSTEM UPDATE [SDD-CN-PBR-060]: page 183 (RTGS UHB chapter 5.1.21 Statement of Account – Download Screen)	60
58	EUROSYSTEM UPDATE [SDD-CN-PBR-064]: page 399 (RTGS UHB chapter 5.1.24.12 Payment Return – New Screen – Return Chain)	61
59	EUROSYSTEM UPDATE [SDD-CN-PBR-060]: page 672 (RTGS UHB chapter 6.1.14 Download statement of account)	61

Proposed wording for the Change request:

CLM UDFS

1 EUROSISTEM UPDATE [SDD-CN-PBR-067]: page 46 (CLM UDFS chapter 3.2.1 Account types)

SDD CN PBR-067 credit flag updated

MCA

An MCA is an account used for the settlement of CBOs and liquidity transfers, as well as the management of the credit line. The sum of the account balance of the MCA plus the credit line thereto must not be negative.

In case CLM does not receive any information whether an account is credit-based in the data propagated by CRDM, CLM will apply as default value « credit-based = true ».

[...]

CLM dedicated transit account

CLM dedicated transit accounts are accounts owned by CBs. They shall either have a zero or a positive balance as they reflect any movement of liquidity from/to the various settlement services (i.e. RTGS, T2S and TIPS). In case CLM does not receive any information whether an account is credit-based in the data propagated by CRDM, CLM will apply as default value « credit-based = false ».

[...]

CLM CB Account

A CB Account in CLM is a cash account that is owned by a CB and that is allowed to have a negative balance. It cannot be restricted or limited in its use.

In case CLM does not receive any information whether an account is credit-based in the data propagated by CRDM, CLM will apply as default value

- for a CLM CB Accounts owned by an out-CB « credit-based = true » and
- for a CLM CB Account owned by an Eurosystem CB « credit-based = false ».

[...]

Overnight deposit account

An overnight deposit account is owned by the relevant CB but is opened in the name of the CLM Account Holder. This is done via the attribute "linked account" and therefore it is possible for the CLM Account Holder to set up and reverse overnight deposits and to see the balance on the respective overnight deposit account. In case CLM does not receive any information whether an account is credit-based in the data propagated by CRDM, CLM will apply as default value « credit-based = true ».

[...]

Marginal lending account

A marginal lending account is owned by the relevant CB but is opened in the name of the CLM Account Holder. This is done via the attribute "linked account" and therefore it is possible for the CLM Account Holder to see the balance on the respective marginal lending account.

In case CLM does not receive any information whether an account is credit-based in the data propagated by CRDM, CLM will apply as default value « credit-based = false ».

[...]

CB ECB account

A CB ECB account is an account that records the CB's asset/liability position towards the ECB in respect of cross-CB community transactions. In case CLM does not receive any information whether an account is credit-based in the data propagated by CRDM, CLM will apply as default value « credit-based = false ».

[...]

ECB mirror account

An ECB mirror account is an account owned by the ECB for each CB on which the settlement postings done on the CB ECB accounts are “mirrored”. In case CLM does not receive any information whether an account is credit-based in the data propagated by CRDM, CLM will apply as default value « credit-based = false ».

[...]

CLM technical account for ECONS II [see CR 81]:

The CLM technical account for ECONS is set up in CRDM. It is needed for the settlement of balances from ECONS II in CLM on the ECONS II closing date. In case CLM does not receive any information whether an account is credit-based in the data propagated by CRDM, CLM will apply as default value « credit-based = false ».

[...]

2 EUROSYSYSTEM UPDATE [internal review]: page 55 (CLM UDFS chapter 3.2.5 Blocking/unblocking account)

correction

It is possible to block MCA cash accounts in CLM. Blocking is done by the responsible CB. The blocking of cash accounts is possible for:

- credit and debit;
- debit;
- credit.

When blocking a cash account in CRDM, the blocking request can include a valid from date and time. This value indicates the calendar date as of when the cash account is blocked. If not stated, the next business date applies by default. If the valid from date and time is specified as immediate, the blocking becomes effective immediately. The same behaviour is applicable for the unblocking of cash accounts.

In case CRDM marks the MCA cash account as blocked for credit and debit, credits and debits without prior confirmation of the respective CB are not allowed on the MCA cash account. If the MCA cash account is blocked for debit, credits are still allowed on this cash account. The reverse logic applies in case of blocking for credit (debits are allowed).

3 EUROSYSYSTEM UPDATE [internal review]: page 68 (CLM UDFS chapter 3.5 Shared reference data)

Spelling correction

Table 13 - Attributes of the duplicate check

Concerned process	Parameter	Created by	Updated by	Mandatory/optional	Standard or default value
[...]					
Liquidity transfer order duplicate check	Number of business days in the past for duplicate check on liquidity transfer orders	Operator	Operator	M	Five 5 business days
[...]					

4 EUROSISTEM UPDATE [internal review]: page 68 (CLM UDFS chapter 4.1 T2 calendar)

Alignment of the term "Euro" throughout the CLM UDFS
--

The term "Euro" has to be aligned throughout the whole UDFS to be spelled with a capital "E".

5 EUROSISTEM UPDATE [internal review]: page 70 (CLM UDFS chapter 4.2 CLM schedule)

Detailed clarification, spelling correction

Events can be time-based or not time-based. Events which are not time-based depend on the ~~occurrence~~ occurrence of the defined previous event and the completion of the associated processes. Events which are time-based depend on the ~~occurrence occurrence~~ of the defined previous event, the completion of the associated processes and the achievement of the defined point in time for this time-based event.

[...]

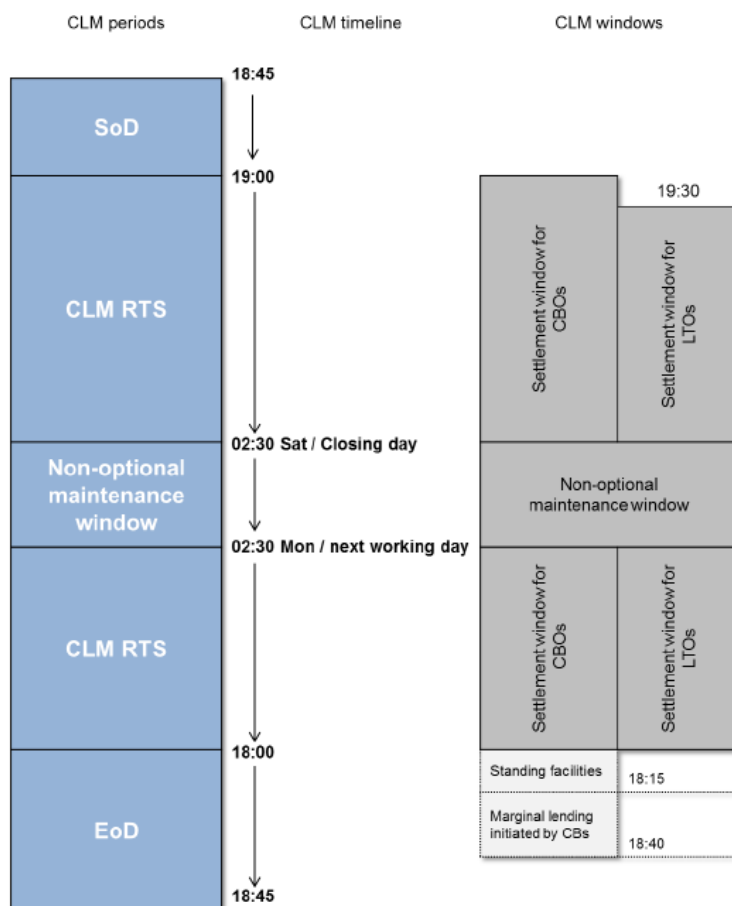
All times refer to Central European Time (CET) or Central European Summer Time (CEST), where applicable.¹

6 EUROSISTEM UPDATE [internal review]: page 72 (CLM UDFS chapter 4.3 Overview description of the business day)

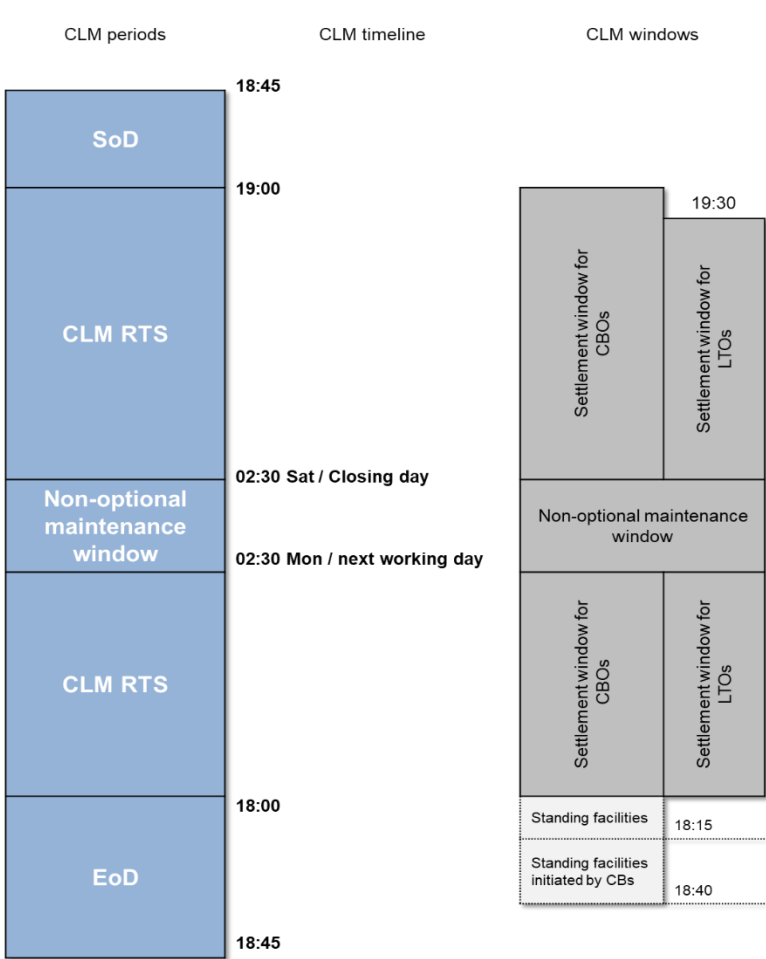
Correction of Figure 14 and 15 – replacement of Marginal lending initiated by CBs to Standing facilities initiated by CBs

¹ For reasons of simplification, only CET is used in the following sections of the document, without any additional indication of CEST, even though times always refer to either CET or CEST, depending on whether winter or summer time applies.

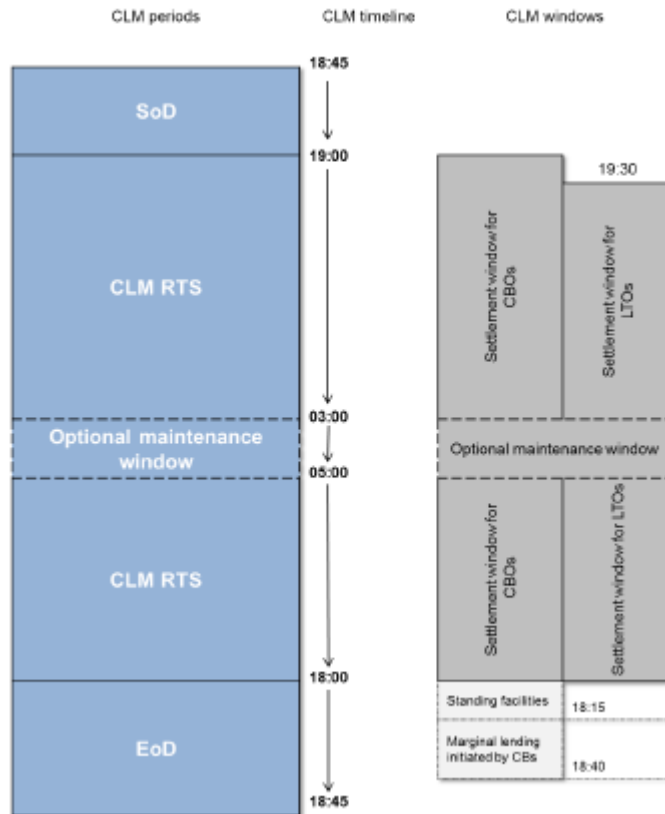
Old figure 14 - CLM high-level schedule with non-optional maintenance window:



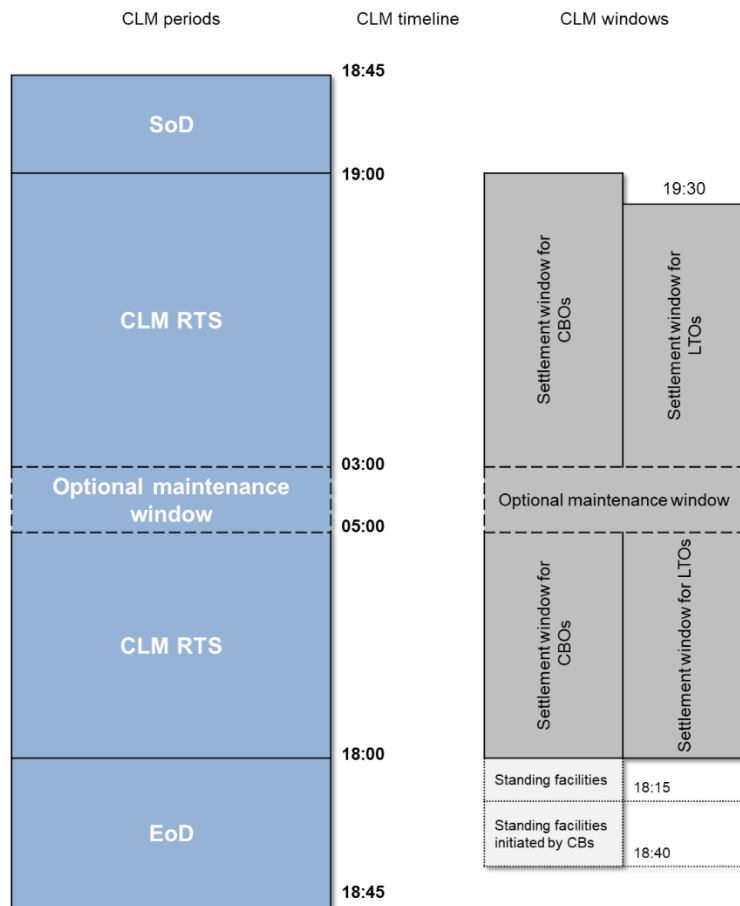
New figure 14 - CLM high-level schedule with non-optional maintenance window:



Old figure 15 - CLM high-level schedule with optional maintenance window:



New figure 15 - CLM high-level schedule with optional maintenance window:



7 EUROSYSTEM UPDATE [internal review]: page 71 (CLM UDFS chapter 4.3 Overview description of the business day)

Detailed clarification, spelling correction

- end-of-day (EoD)

[...]

Due to the optionality of the maintenance window there are two kinds of business day schedules.

8 EUROSYSTEM UPDATE [internal review]: page 79 (CLM UDFS chapter 4.4.2.1 Settlement window for CBOs)

Detailed clarification

CLM processes	Events and description of the processes
[...]	[...]
Refunding of overnight deposit	CLM performs the refunding of overnight deposit amounts and the calculation and posting of interest. (Overnight deposit)
[...]	[...]

Table 16 - Events and processes at the start of settlement window for CBOs

9 EUROSYSTEM UPDATE [internal review]: page 80 (CLM UDFS chapter 4.4.2.2 Settlement window for liquidity transfer orders)

Detailed clarification

CLM processes	Events and description of the processes
[...]	
Processing of immediate liquidity transfers	CLM starts accepting and general processing <u>of</u> immediate liquidity transfer orders and <u>processes</u> parked immediate liquidity transfer orders which are <u>were</u> entered <u>via A2A</u> after CLM business day event "Start of CLM RTS" from CLM Actors. ²

Table 17 - Events and processes at the start of settlement window for liquidity transfer orders

10 EUROSYSTEM UPDATE [internal review]: page 83 (CLM UDFS chapter 4.4.4 End-of-day period (18:00 - 18:45 CET))

Detailed clarification

² When an immediate liquidity transfer order is parked it cannot be revoked.

CLM processes/EoD cut-offs	Events and description of the processes
[...]	
Rejection of not finally processed credit line modifications	Credit line modifications with non-final status <u>and connected payments with status earmarked due to blocking</u> are rejected.
Check of reference data	<u>After propagation of reference data for next business day:</u> Check of cash accounts to be closed as of the next business day with balance and processing of emergency liquidity transfer <u>towards the responsible CB</u> in case of need.
Calculation of aggregated EoD balances for automatic marginal lending	After the event "CB cut-off for marginal lending on request" CLM calculates the aggregated EoD balance of a CLM Account Holder under consideration of liquidity positions in other all settlement services received in the general ledgers.
Automatic marginal lending	The automatic marginal lending is triggered by CLM if the calculated aggregated balance of a CLM Account Holder is negative after the event " CB cut-off for marginal lending on request " <u>"CB cut-off for standing facilities" and the CLM Account Holder is allowed to access marginal lending. Otherwise, CLM sends a spillover notification (camt.004) to the responsible CB.</u>
[...]	
CLM general ledgers delivery	
<u>Check final status of all business transactions</u>	<u>CLM checks finality of all business transactions before closing the business day.</u>
EoD completed	
[...]	

Table 20 - Events and processes during EoD

11 EUROSISTEM UPDATE [ECB JIRA CSLD-1368]: page 101 (CLM UDFS chapter 5.3.7 Revocation of payment orders)

Reference to message chapter 11.4 included

[...]

Further details are provided in chapter [Perform CLM payment order revocation](#).

For information on the matching elements between the revocation message and the message of the payment order to be revoked, see chapter [Message References](#).

12 EUROSISTEM UPDATE [internal review]: page 122 (CLM UDFS chapter 5.4.2.1 Overview)

correction

Note: The only type of liquidity transfer order that can be queued is an automated liquidity transfer order. However, an automated liquidity transfer order triggered in CLM can be queued in RTGS only. ~~Chapter "XXX"~~

13 EUROSISTEM UPDATE [internal review]: page 143 (CLM UDFS chapter 5.6.3.1 Overview)

correction

An overall negative balance on the MCA of a CLM Account Holder after the event ~~Table 20-~~ "CB cut-off for marginal lending on request" shall automatically be considered as a request by this CLM Account Holder for recourse to the marginal lending facility.

14 EUROSISTEM UPDATE [ECB JIRA CSLD-1368]: page 207 (CLM UDFS chapter 9.4.1 Description)

Reference to message chapter 11.4 included
--

[...]

Note: Only payment orders sent as regular payments can be revoked as connected payments are never queued.

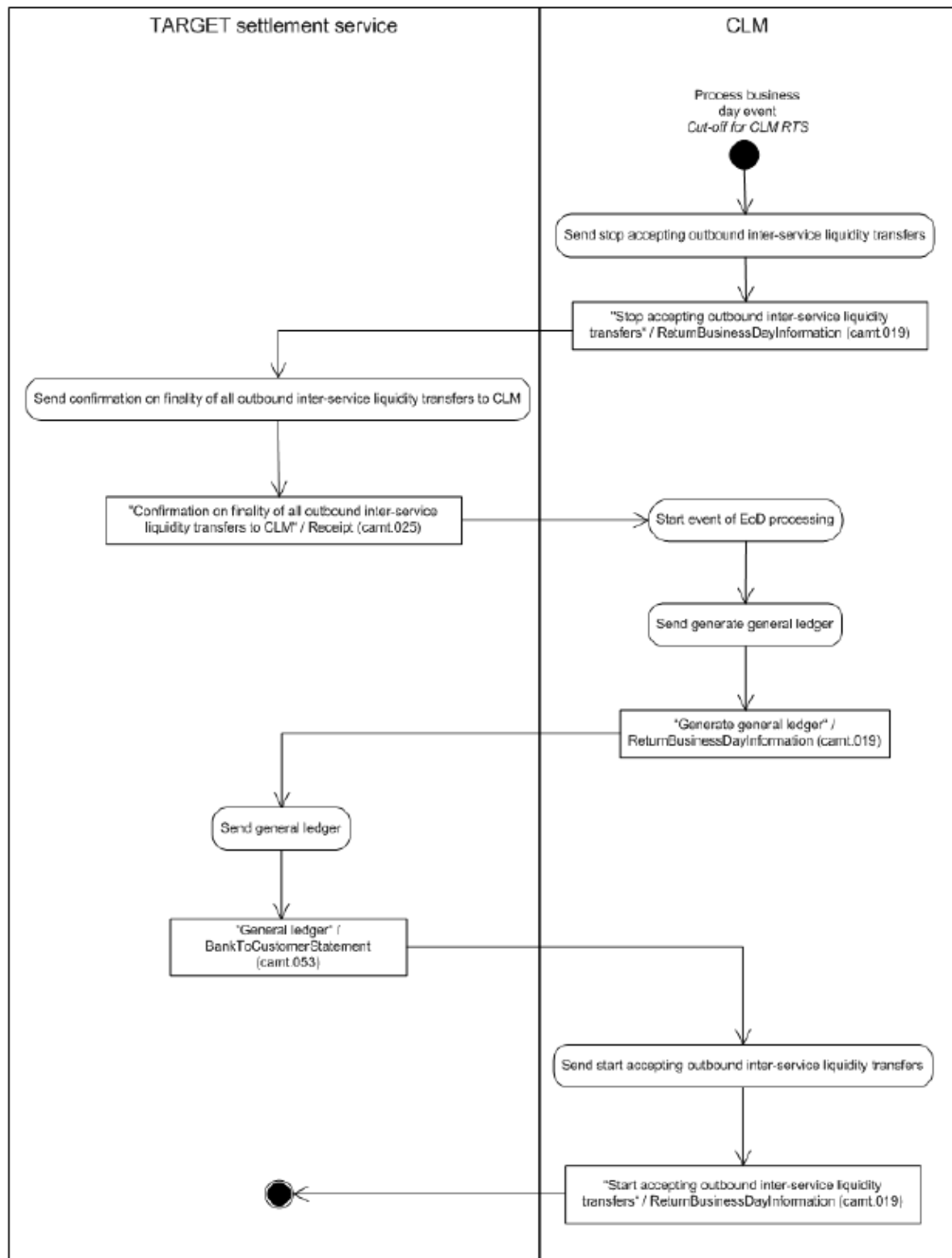
Details on the revocation functionality are provided in chapter [Revocation of payment orders](#).

For information on the matching elements between the revocation message and the message of the payment order to be revoked, see chapter [Message References](#).

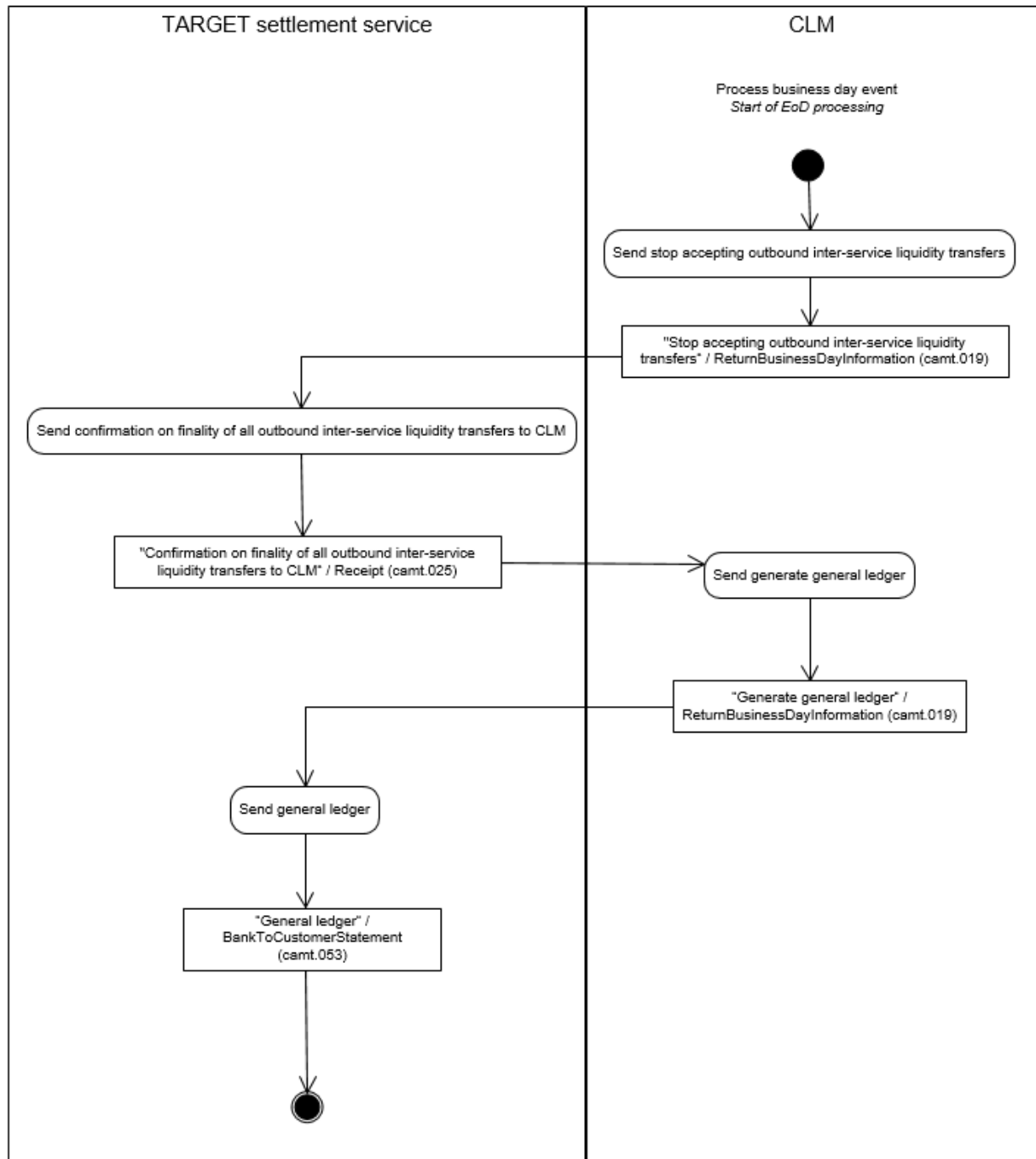
15 EUROSISTEM UPDATE [internal review]: page 255 (CLM UDFS chapter 9.20.1 Description)

Update figure 65 to align with changes from CR0085
--

Old figure 65 - Coordinate general ledger creation with other settlement services.



New figure 65 - Coordinate general ledger creation with other settlement services



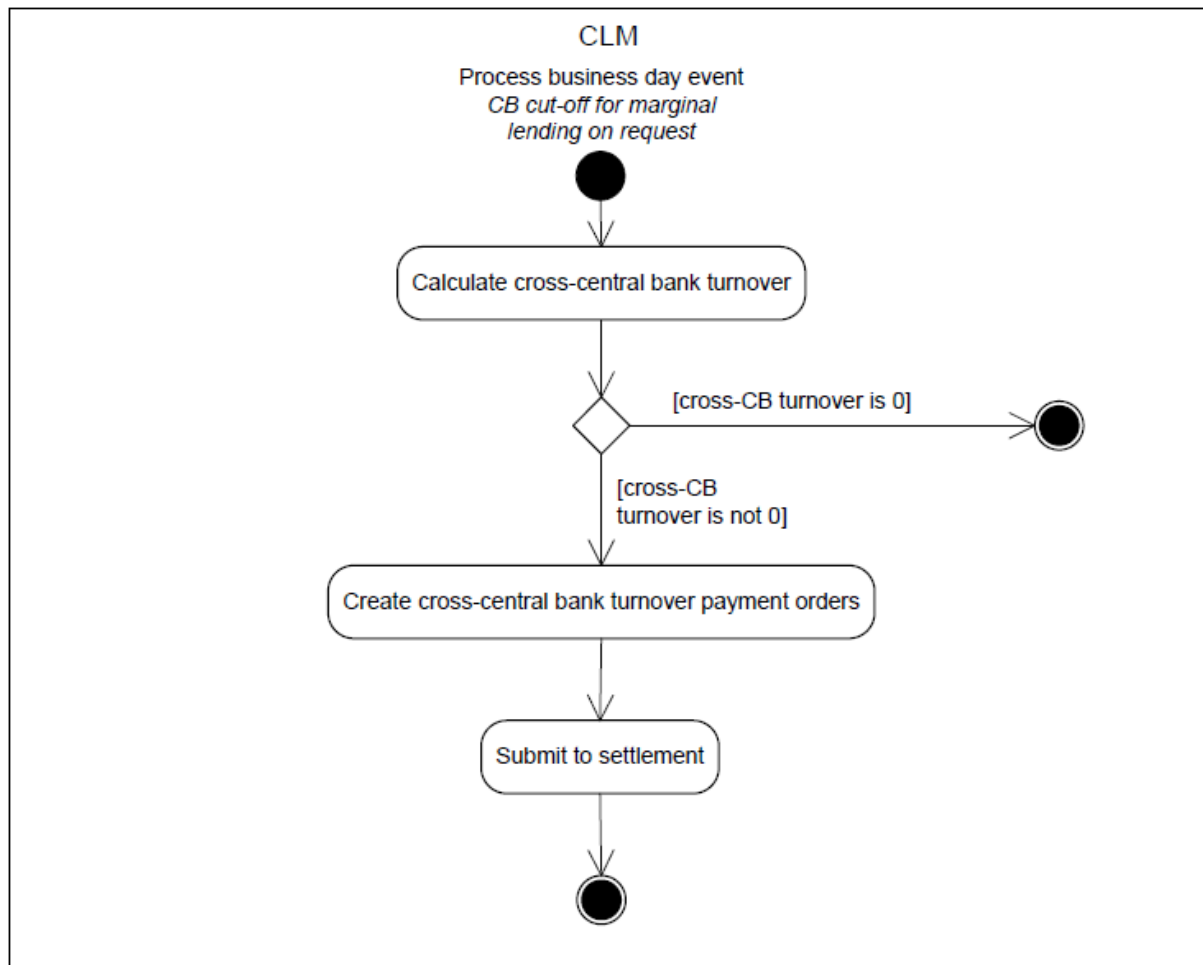
Send start accepting outbound inter-service liquidity transfers

After the reception of the "General ledger"/BankToCustomerStatement (camt.053) CLM continues its EoD processing. When the EoD processing is completed and the business day is changed CLM sends a "Start accepting outbound inter-service liquidity transfers"/ReturnBusinessDayInformation (camt.019) to the settlement service.

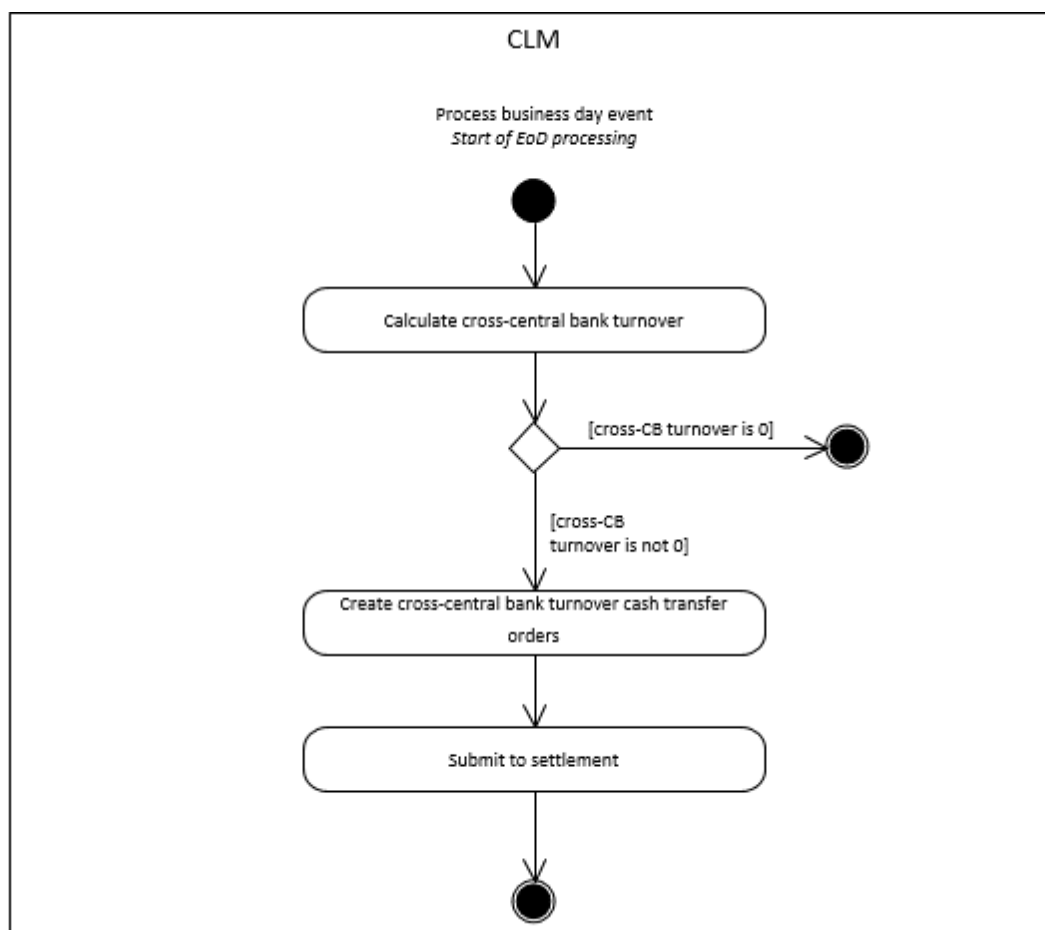
16 EUROSISTEM UPDATE [internal review]: page 258 (CLM UDFS chapter 9.21 Process cross-CB turnover)

Update figure 66 to align with changes from CR0085

Old figure 66 - Process cross-CB turnover



New figure 66 - Process cross-CB turnover

Calculate cross-CB turnover

The process step calculates the positions between the CBs. Further details on cross-CB turnover can be found in chapter Cross-CB turnover:

- in case the cross-CB turnover is zero, the processing terminates;
- in case the cross-CB turnover is different from zero, the processing continues with “Create cross-CB turnover ~~payment~~ cash transfer order”.

Create cross-CB turnover ~~payment~~ cash transfer orders

The process step generates the cross-CB turnover ~~payment~~ cash transfer orders (i.e. one for posting on the CB ECB accounts and one for the corresponding ECB mirror accounts) and the process continues with “Submit to settlement”.

Submit to settlement

This processing step submits the cross-CB turnover ~~payment~~ cash transfer order to the process Perform standard CLM settlement.

17 EUROSISTEM UPDATE [internal review]: page 261 (CLM UDFS chapter 9.22.2 Process business day event “Start of CLM RTS”)

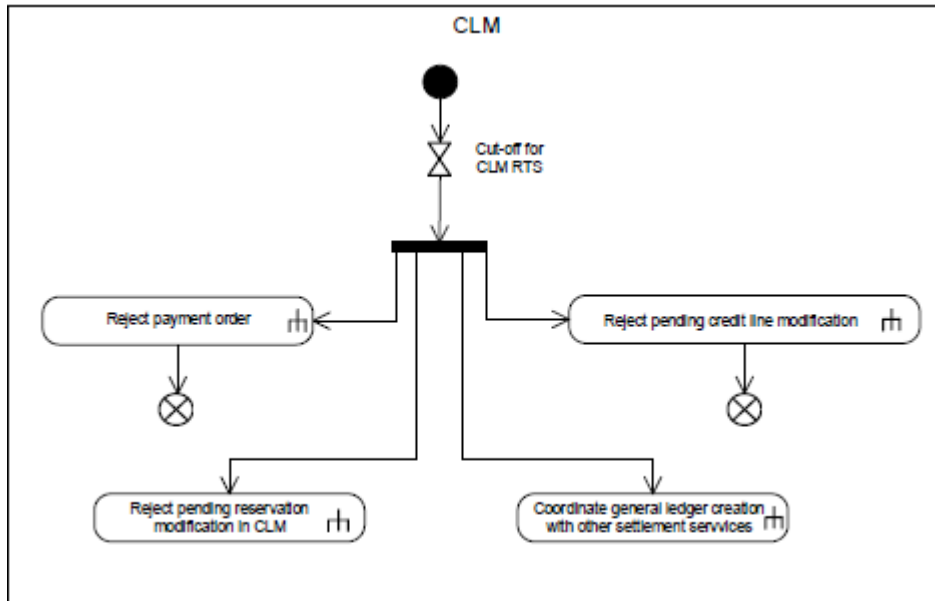
enhancements

This process is valid oO only until ECMS go-live.

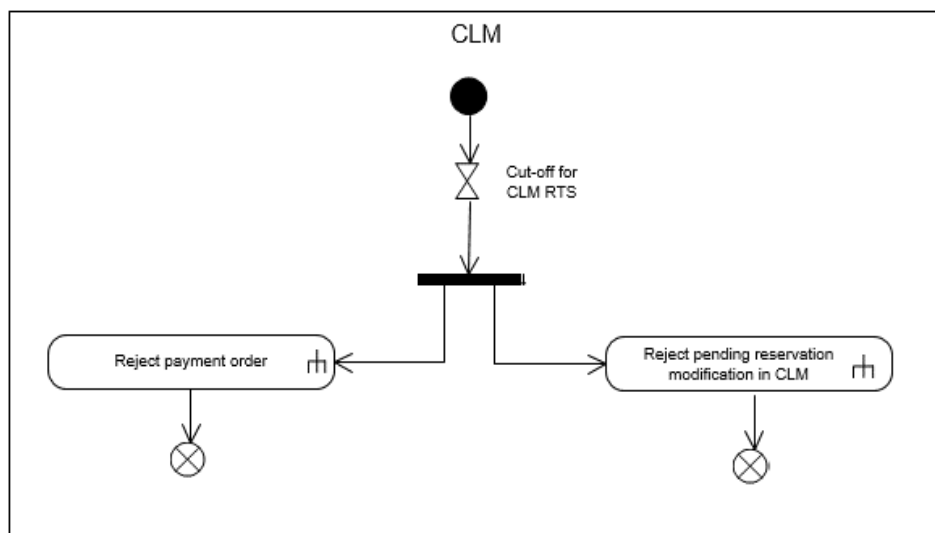
18 UPDATE [internal review]: page 263 (CLM UDFS chapter 9.22.3 Process business day event “Cut-off for CLM RTS”)

corrections in figure 69

Old figure 69 - Process business day event “Cut-off for CLM RTS”



New figure 69 - Process business day event “Cut-off for CLM RTS”



The time-based event “Cut-off CLM RTS” triggers the closure processing, which subsequently results in the parallel triggering of the following sub-processes:

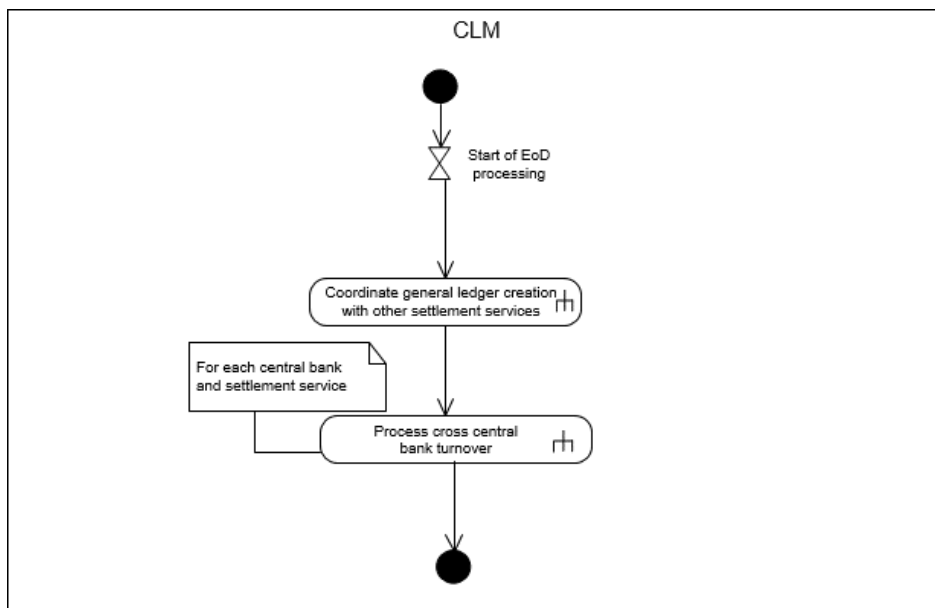
- “Reject payment order”;
- “Reject pending reservation modification in CLM”;
- ~~“Coordinate general ledger creation with other settlement services”;~~
- ~~“Reject pending credit line modification”.~~

19 UPDATE [internal review]: page 263 (CLM UDFS new chapter 9.22.4 Process business day event “Start of EoD processing”)

Add a new chapter named “Process business day event “Start of EoD processing”

9.22.4 Process business day event “Start of EoD processing”

Add new figure xxx – Process business day event “Start of EoD processing”



The not time-based event “Start of EoD processing” triggers the end of day activities with following sub-processes:

- “Coordinate general ledger with other settlement services”:
- “Process of cross central bank turnover”

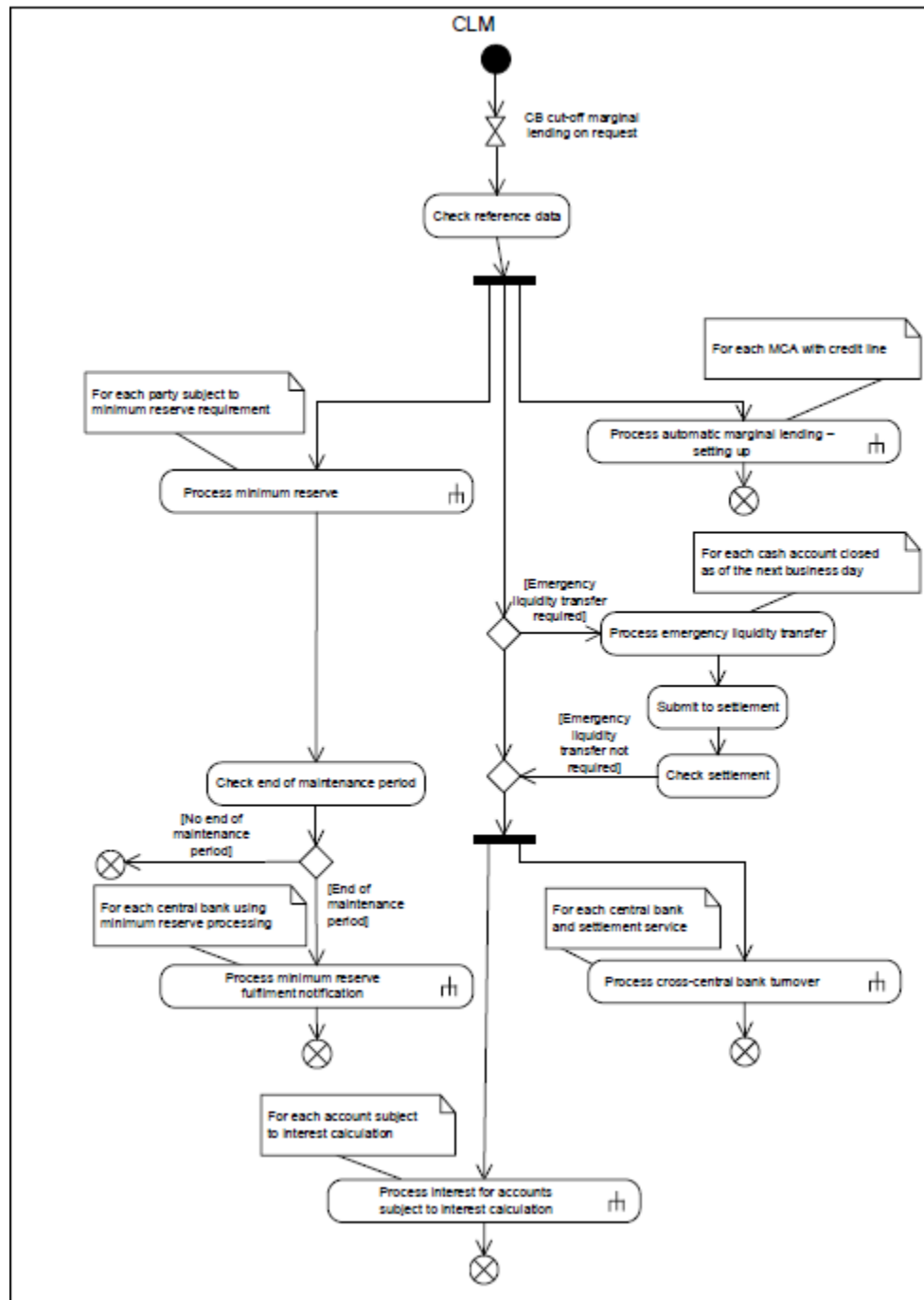
20 UPDATE [internal review]: page 263 (CLM UDFS restructured chapter 9.22.5 Process business day event “Start of EoD processing”)

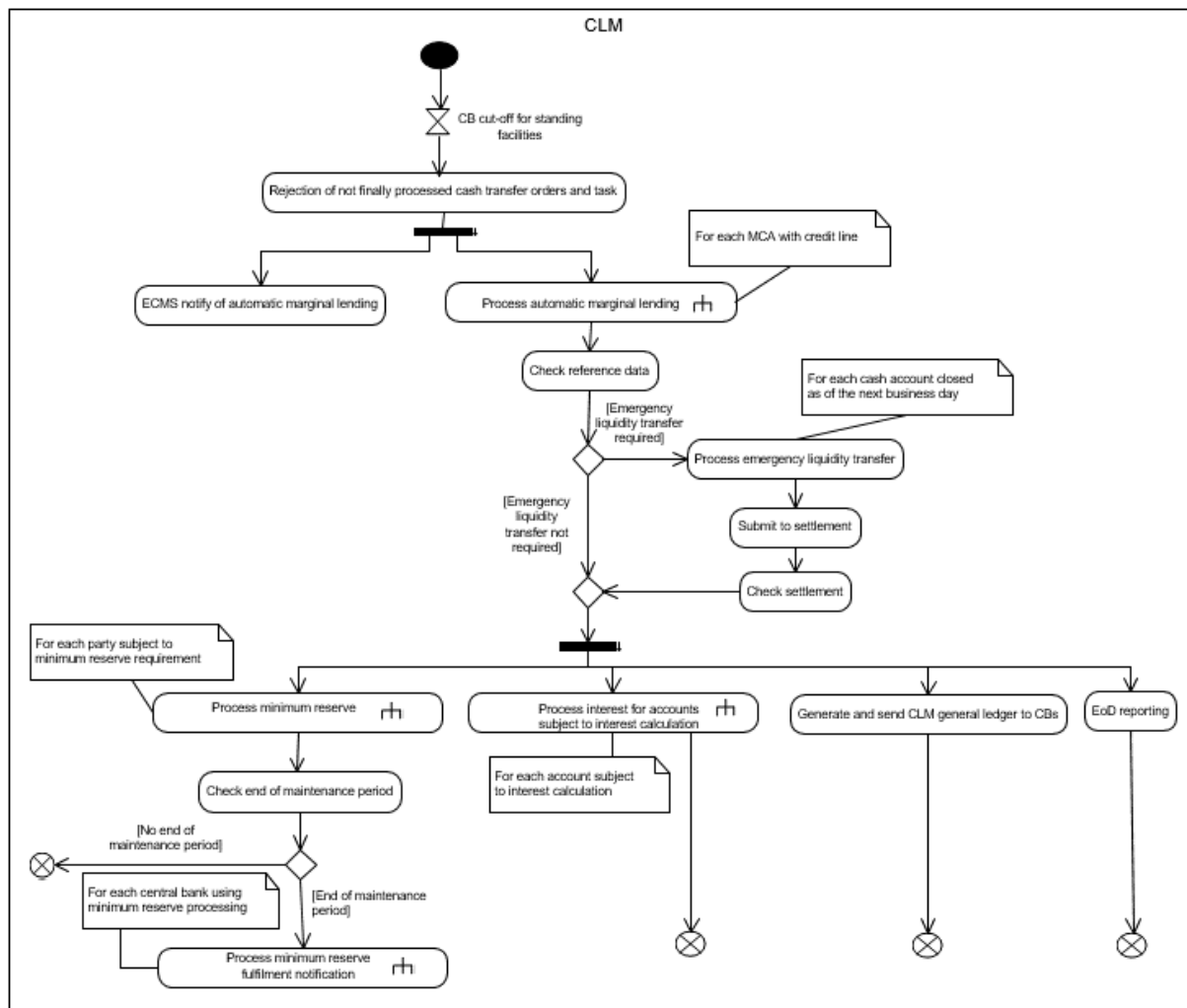
restructure chapter 9.22.4 Process business day event “CB cut-off for marginal lending on request” into 9.22.5 Process business day event “CB cut-off for standing facilities”

9.22.45 Process business day event “~~CB cut-off for marginal lending on request~~ CB cut-off for standing facilities”

This process serves as basis for all sub-processes to be initiated after the event “CB cut-off for ~~marginal lending on request~~ standing facilities”:

Old figure 70 - Process “CB cut-off for marginal lending on request standing facilities”



New figure 70 - Process “CB cut-off for marginal lending on request standing facilities”

The event “CB cut-off for marginal lending on request standing facilities” triggers the rejection of not finally processed cash transfer orders and tasks.

The process continues with the processing step “Check reference data”.

Check reference data

The processing step checks if there are any cash accounts to be closed as of the next business day that have a balance.

- In case no such accounts exist, the EoD processing continues and triggers in parallel the following sub-processes.
 - ~~Process automatic marginal lending – setting up – before and after launch of ECMS for each MCA with credit line. After launch of ECMS, CLM sends a notification to ECMS including all processed automatic marginal lending connected payments.~~
 - ~~Process cross CB turnover for each CB and settlement service. After successful finalisation of “Process minimum reserve” for each institution subject to minimum reserve, the processing continues with “Check end of maintenance period”.~~
 - Process minimum reserve for each party subject to minimum reserve requirement.
 - Process interest for accounts subject to interest calculation for each account subject to interest calculation.
 - Generate and send CLM general ledger to CBs.
 - EoD reporting.
- In case there is a cash account to be closed which has a balance and shall be closed as of the next business day, the processing continues with the processing step “Process emergency liquidity transfer”.

[...]

Check settlement

This processing step checks continuously whether all submitted liquidity transfer orders are settled. Once all liquidity transfer orders are settled, the processing continues and triggers in parallel the following sub-processes.

- ~~Process automatic marginal lending—setting up—before and after launch of ECMS for each MCA with credit line.~~
- ~~Process cross-CB turnover for each CB and settlement service.~~
- Process minimum reserve for each party subject to minimum reserve requirement. After successful finalisation of “Process minimum reserve” for each institution subject to minimum reserve, the processing continues with “Check end of maintenance period”.
- Process interest for accounts subject to interest calculation for each account subject to interest calculation.
 - Generate and send CLM general ledger to CBs.
 - EoD reporting.

21 EUROSYSYSTEM UPDATE [SDD-PBR-072]: page 310 (CLM UDFS chapter 11.1.3.1 Technical validation)

Add explanation for handling of namespace prefix to the end of the chapter.

[...]

Regarding the use of namespace prefixes, CLM does not encourage but accepts and processes valid inbound messages and inbound files composed of one or several messages containing those.

However, when sending outbound messages, CLM does not re-use nor add namespace prefixes.

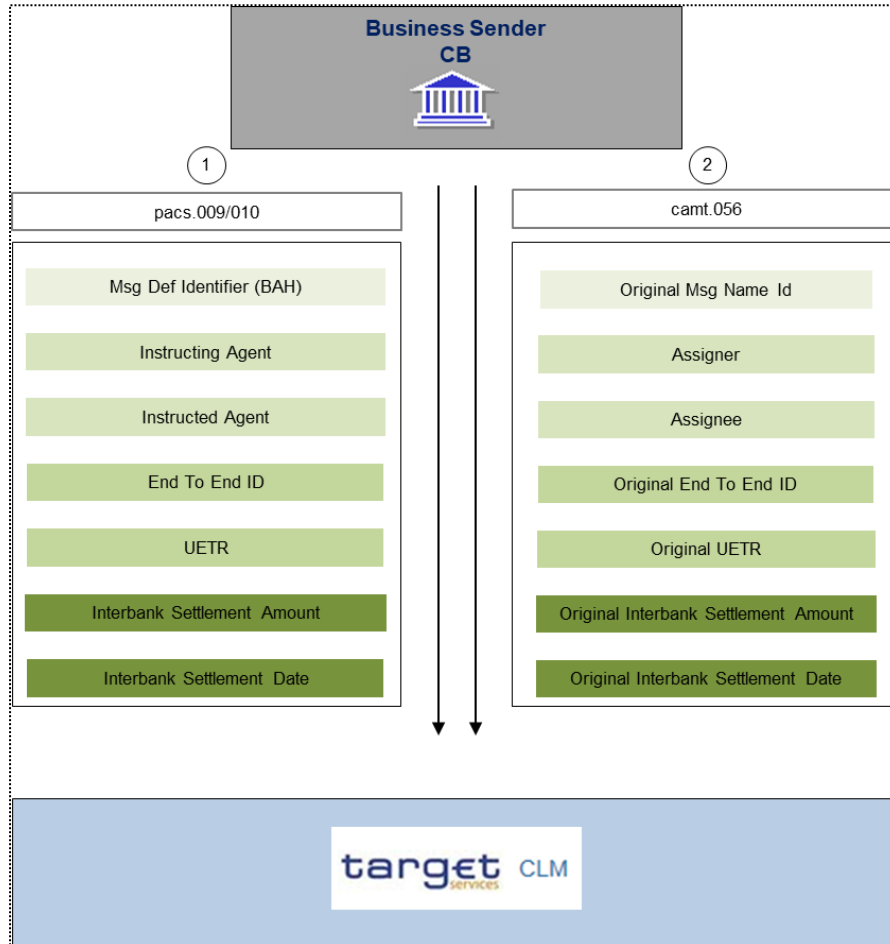
22 EUROSYSYSTEM UPDATE [ECB JIRA CSLD-1368]: page 325 (CLM UDFS chapter 11.4 Message References)

Add text and additional diagram to show message elements mapping for payment revocation

[...]

Figure 91 Message references

The revocation of a payment order in CLM is only possible when all the elements defined in the diagram below can be matched between the revocation message (camt.056) and the message of the payment order to be revoked (pacs.009/010).

Figure xxx- Linking camt.056 and payment orders

Details for the revocation of payment orders are outlined in chapter [revocation of payment orders](#).

23 EUROSISTEM UPDATE [SDD-PBR-073]: pages 401-402 (CLM UDFS chapter 12.2.3.3 the message in business context); page 417 (CLM UDFS chapter 12.2.4.3 the message in business context)

Change the annotations for the reporting of Debtor and Creditor BICs in Liquidity Transfers

Message Item	Utilisation
[...]	
Search Criteria – Payment Search – Parties – Debtor Can be used either for search of <ul style="list-style-type: none"> BIC of <Debtor> in case of payment <u>if used in the cash transfer</u> (order)s, Account number from <DebtorAccount> in case of liquidity transfer (order)s. 	
Debtor BIC /Document/GetTx/TxQryDef/TxCrit/NewCrit/SchCrit/PmtSch/Pties/Dbtr/Pty/Id/OrgId/AnyBIC	Can be used for search of BIC of <Debtor> in case of payment <u>if used in the cash transfer</u> (order)s.
[...]	
Search Criteria – Payment Search – Parties – Creditor Can be used either for search of <ul style="list-style-type: none"> BIC of <Creditor> in case of payment <u>if used in the cash transfer</u> (order)s, Account number from <CreditorAccount> in case of liquidity transfer (order)s. 	
Creditor BIC Document/GetTx/TxQryDef/TxCrit/NewCrit/SchCrit/PmtSch/Pties/Cdtr/Pty/Id/OrgId/AnyBIC	Can be used for search of BIC of <Creditor> in case of payment <u>if used in the cash transfer</u> (order)s.
[...]	

Table 120 - GetTransaction (camt.005)

Message Item	Utilisation
[...]	
Business Report – Transaction Report – Transaction – Payment – Parties – Debtor Provides the: <ul style="list-style-type: none"> BIC of <Debtor> in the case of payment <u>if used in the cash transfer</u> (order) Account number from <DebtorAccount> in the case of liquidity transfer (order). 	
Debtor BIC /Document/RtrTx/RptOrErr/BizRpt/TxRpt/TxOrErr/Tx/Pmt/Pties/Dbtr/Pty/Id/OrgId/AnyBIC	Provides the BIC of <Debtor> in the case of payment <u>if used in the cash transfer</u> (order).
[...]	
Business Report – Transaction Report – Transaction – Payment – Parties – Creditor Provides the: <ul style="list-style-type: none"> BIC of <Creditor> in the case of payment <u>if used in the cash transfer</u> (order) Account number from <CreditorAccount> in the case of liquidity transfer (order). 	
Creditor BIC Document/RtrTx/RptOrErr/BizRpt/TxRpt/TxOrErr/Tx/Pmt/Pties/Cdtr/Pty/Id/OrgId/AnyBIC	Provides the BIC of <Creditor> in the case of payment <u>if used in the cash transfer</u> (order).
[...]	

Table 127 - ReturnTransaction (camt.006)

24 EUROSISTEM UPDATE [Internal Review]: pages 445 and 449 (CLM UDFS chapter 12.2.6.3 the message in business context)

T2D2 change of code and the time format was introduced in CR0076 but alignment in Part III of CLM UDFS was missed

Message item	Utilisation
[...]	
Scheduled Time /Document/RtrBizDayInf/RptOrErr/BizRpt/BizDayOrErr /BizDayInf/SysInfPerCcy/Evt/SchdldTm	2019-10-08T05:00:00.000+00:00
Event /Document/RtrBizDayInf/RptOrErr/BizRpt/BizDayOrErr /BizDayInf/SysInfPerCcy/Evt/Tp/Prtry/Id	T2DP T2D2
Scheduled Time /Document/RtrBizDayInf/RptOrErr/BizRpt/BizDayOrErr /BizDayInf/SysInfPerCcy/Evt/SchdldTm	2019-10-08T18:00:00.000+00:00 9999-01-01T00:00:00.000+00:00
[...]	

Table 140 - ReturnBusinessDayInformation (camt.019) – camt.018 Request for event status information (Optional Maintenance Window) (Scenario 058)

Message item	Utilisation
[...]	[...]
Event /Document/RtrBizDayInf/RptOrErr/BizRpt/BizDayOrErr /BizDayInf/SysInfPerCcy/Evt/Tp/Prtry/Id	T2DP T2D2
Scheduled Time /Document/RtrBizDayInf/RptOrErr/BizRpt/BizDayOrErr /BizDayInf/SysInfPerCcy/Evt/SchdldTm	2019-10-08T18:00:00.000+00:00 9999-01-01T00:00:00.000+00:00
[...]	[...]

Table 142 - ReturnBusinessDayInformation (camt.019) – camt.018 request for event status information (non-optional Maintenance Window) (Scenario 071)

25 EUROSISTEM UPDATE [SDD-PBR-073]: pages 486-487 (CLM UDFS chapter 12.2.13.3 the message in business context); page 497-498 (CLM UDFS chapter 12.2.14.3 the message in business context)

Change the annotations for the reporting of Debtor and Creditor BICs in Liquidity Transfers

Message Item	Utilisation
[...]	
Debtor BIC /Document/BkToCstmrStmnt/Stmnt/Ntry/NtryDtls/TxDtls/ RltdPties/Dbtr/Pty/Id/OrgId/AnyBIC	Provided if debtor BIC is used in the payment <u>cash transfer</u> order.
[...]	
Creditor BIC /Document/BkToCstmrStmnt/Stmnt/Ntry/NtryDtls/TxDtls/ RltdPties/Cdtr/Pty/Id/OrgId/AnyBIC	Provided if creditor BIC is used in the payment <u>cash transfer</u> order.

[...]	
-------	--

Table 177 - BankToCustomerStatement (camt.053)

Message Item	Utilisation
[...]	[...]
Debtor BIC /Document/BkToCstmrDbtCdtNtfctn/Ntfctn/Ntry/NtryDtl s/TxDtls/RltdPties/Dbtr/Pty/Id/OrgId/AnyBIC	Provided if the debtor BIC is used in payment <u>cash transfer</u> order.
[...]	[...]
Creditor BIC /Document/BkToCstmrDbtCdtNtfctn/Ntfctn/Ntry/NtryDtl s/TxDtls/RltdPties/Cdtr/Pty/Id/OrgId/AnyBIC	Provided if the creditor BIC is used in the payment <u>cash transfer</u> order.
[...]	[...]

Table 179 - BankToCustomerDebitCreditNotification (camt.054)

26 EUROSISTEM UPDATE [Internal Review]: page 601 (CLM UDFS chapter 13.4.2.2 Schema)

Remove the reference to HVPS+ in CLM

13.4.2.2 Schema

Outline of the schema

[...]

GroupHeader

[...]

CreditTransferTransactionInformation

Set of elements providing information specific to the transaction and relevant for settlement in CLM. ~~All further elements in the message are checked against the HVPS+ rules but not relevant for settlement.~~

[...]

27 EUROSISTEM UPDATE [Internal Review]: page 611 (CLM UDFS chapter 13.4.3.2 Schema)

Remove the reference to HVPS+ in CLM

13.4.3.2 Schema

Outline of the schema

[...]

GroupHeader

[...]

CreditInstruction

This building block is mandatory and non-repetitive. Set of elements providing information specific to the individual direct debit and relevant for settlement in RTGS CLM. ~~All further elements in the message are checked against the HVPS+ rules but not relevant for settlement:~~

[...]

28 EUROSYSYSTEM UPDATE [Internal Review]: page 616 (CLM UDFS chapter 13.4.3.3 The message in business context)

When the pacs.010 was revised in CR-081, the sample has been upgraded but UDFS table 245 is still missing one element.

[...]	
Direct Debit Transaction Information	
Payment Identification	
[...]	
UETR /Document/FIDrctDbt/CdtInstr/DrctDbtTxInf/PmtId/UETR	e010b006-59c5-41e9-be4c-d45102fc201e
<u>Local Instrument Proprietary</u> <u>/Document/FIDrctDbt/CdtInstr/DrctDbtTxInf/PmtTplnf/LclInstrm/Prtry</u>	<u>BLKD</u>
Interbank Settlement Amount /Document/FIDrctDbt/CdtInstr/DrctDbtTxInf/IntrBkSttlmAmt	EUR 36000
Interbank Settlement Date /Document/FIDrctDbt/CdtInstr/DrctDbtTxInf/IntrBkSttlmDt	2019-10-08
[...]	

Table 245 - FinancialInstitutionDirectDebit (pacs.010) – usage case Financial Institution Direct Debit Order (Scenario 006)

29 EUROSYSYSTEM UPDATE [Internal Review]: page 627 (CLM UDFS chapter 14.2 Index of validation rules and error codes)

Remove the reference to HVPS+ in CLM

[...]

The sources used for business validation rule descriptions are HVPS+ guidelines, ISO 20022 message validations and T2 specific validations. Based on ~~these three~~ those two validation rule categories, the naming convention for rule-ID and error code are composed as follows:

[...]

30 EUROSYSYSTEM UPDATE [SDD-PBR-074]: page 746+755/756 (CLM UDFS chapter 14.2 Index of validation rules and error codes)

Change validation rule description of VR00100 and VR00580

[...]

Inbound message type	Response message type	Rule source	Validation rule ID	Validation rule description	Error code	Error description	[...]	[...]	[...]
[...]									
pacs.010	pacs.002	T2	VR00100	<p>The business sender 'From' in the BAH must specify:</p> <p>For RTGS: - for payment orders sent by the party itself: An Addressee BIC of the account given in 'Instructing Agent' element in the payload; - for payment orders sent by the CB acting on behalf: Party BIC of responsible CB of owner of account given in 'Instructing Agent' element in the payload.</p> <p>For CLM: Party BIC of owner of account given in 'Instructing Agent' element in the payload. The business sender 'From' in the BAH must specify:</p> <p>For RTGS: - for payment orders sent by the party itself: An Addressee BIC of the account given in 'Instructing Agent' element in the payload; - for payment orders sent by the CB acting on behalf: Party BIC of responsible CB of owner of account given in 'Instructing Agent' element in the payload.</p> <p>For CLM: - for payment orders without code 'BLKD' in 'Local Instrument/Proprietary': Party BIC of owner of account</p>	E010	Invalid business sender			

RTGS UDFS

31 EUROSISTEM UPDATE [internal review]

Alignment of the term "Euro" throughout the RTGS UDFS

The term "Euro" has to be aligned throughout the whole UDFS to be spelled with a capital "E".

32 EUROSISTEM UPDATE [SDD-CN-PBR-067]: page 58 (RTGS UDFS chapter 3.2.1 Account types)

SDD CN PBR-067 credit flag updated

RTGS DCA

RTGS DCAs are used for the settlement of real-time interbank and customer payments and AS transfers. An RTGS DCA can be dedicated for one or several ancillary systems. They shall either have a zero or a positive balance. In case RTGS does not receive any information whether an account is credit-based in the data propagated by CRDM, RTGS will apply as default value « credit-based = true ».

[...]

RTGS sub-account

An RTGS sub-account belongs to an RTGS DCA or an RTGS CB Account and holds dedicated liquidity to allow the settlement of an ancillary system using AS settlement procedure C. An RTGS sub-account shall either have a zero or a positive balance. In case RTGS does not receive any information whether an account is credit-based in the data propagated by CRDM, RTGS will apply as default value « credit-based = true ».

[...]

RTGS dedicated transit account

The RTGS dedicated transit accounts are technical accounts involved in the inter-service liquidity transfer process and cannot be involved in the settlement of payments and AS transfers. In case RTGS does not receive any information whether an account is credit-based in the data propagated by CRDM, RTGS will apply as default value « credit-based = false ».

[...]

RTGS CB Account

An RTGS CB Account is a cash account owned by a CB that is allowed to have negative balance. It can also be used to settle AS transfers. In case RTGS does not receive any information whether an account is credit-based in the data propagated by CRDM, RTGS will apply as default value

- for an RTGS CB Account owned by an out-CB « credit-based = true » and
- for an RTGS CB Account owned by an Eurosystem CBs « credit-based = false ».

[...]

AS guarantee funds account

An AS guarantee funds account is an account in RTGS for maintaining funds allocated to the settlement of balances of an ancillary system in case of failure of settlement bank(s). It applies to AS settlement procedures A and B. In case RTGS does not receive any information whether an account is credit-based in the data propagated by CRDM, RTGS will apply as default value « credit-based = true ».

[...]

AS technical account

An AS technical account is an account used in the context of setting AS transfers. It is an intermediary account for

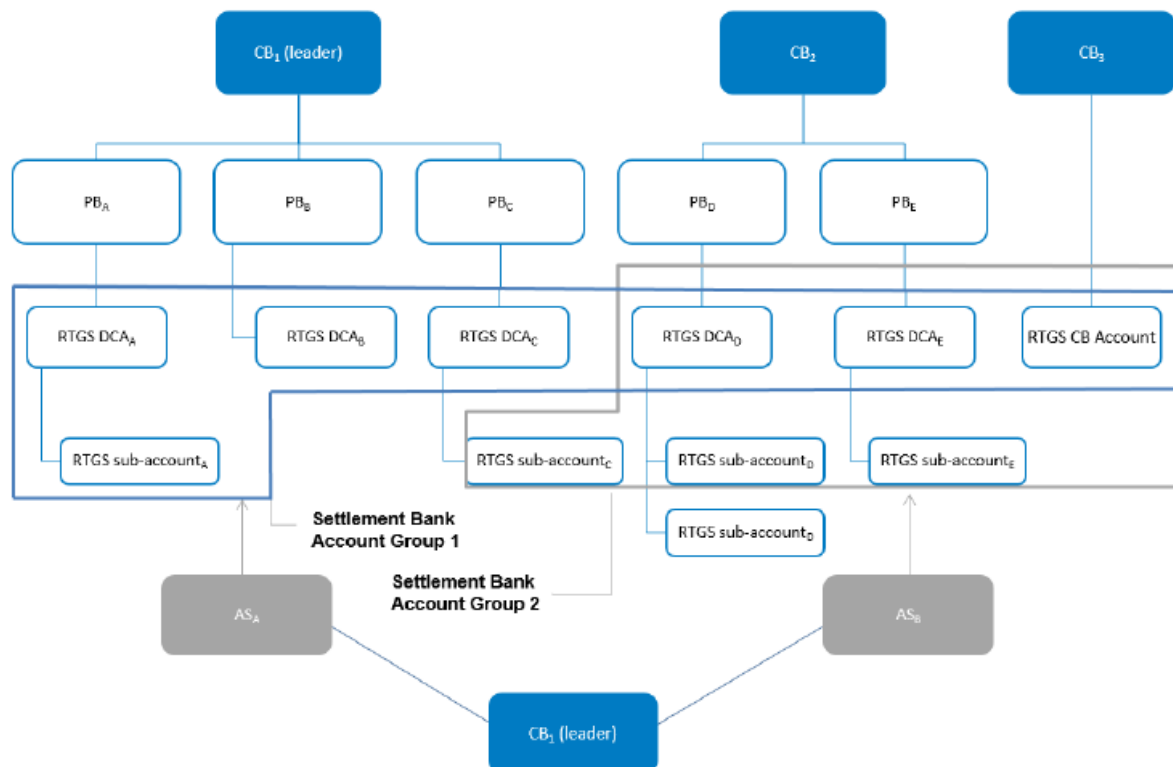
the collection of debits/credits resulting from the settlement of balances. Furthermore, it can be used for transferring funds from the RTGS DCA into the ancillary system and vice versa. An AS technical account is mandatory for AS settlement procedure A, B, C and D and optional for AS settlement procedure E. In case RTGS does not receive any information whether an account is credit-based in the data propagated by CRDM, RTGS will apply as default value « credit-based = true ».

[...]

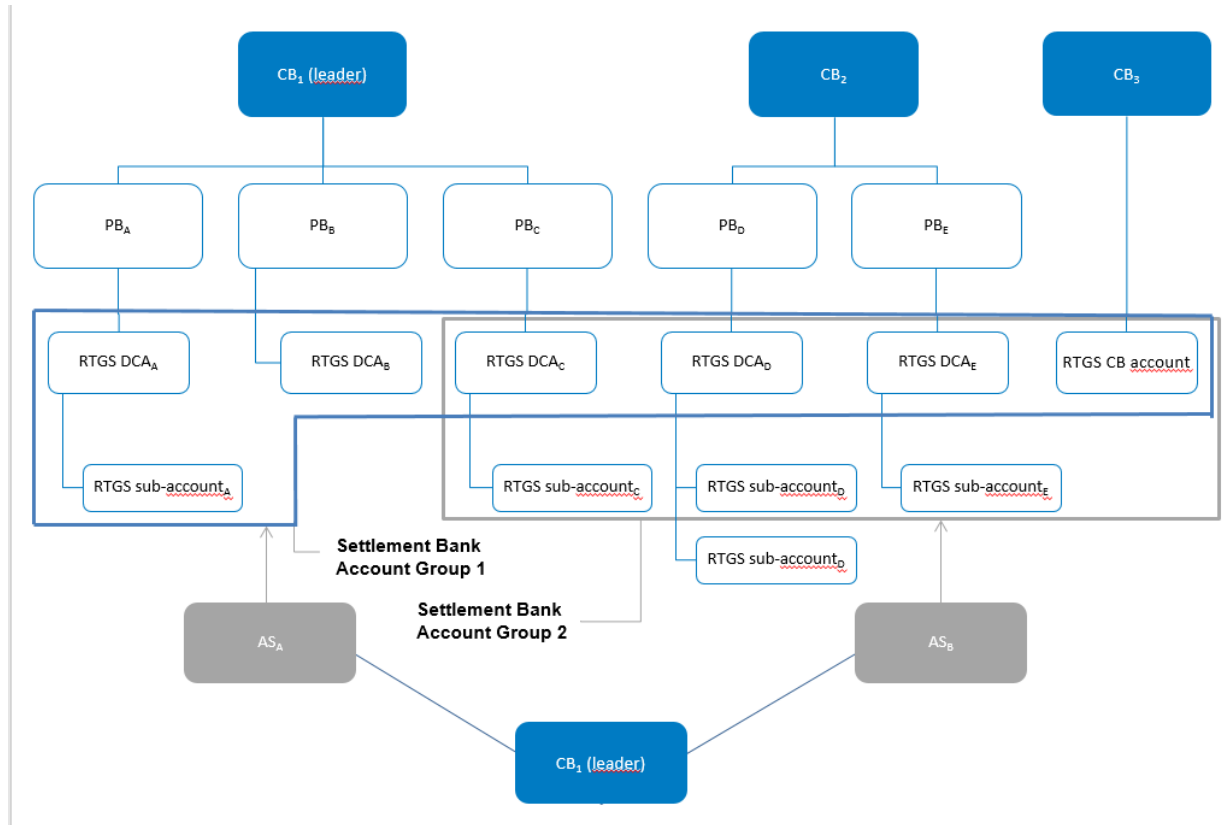
33 EUROSISTEM UPDATE [ECB JIRA DKK-83]: page 71 (RTGS UDFS chapter 3.4 Shared reference data)

Correction of Figure 9 - Settlement Bank Account Group to include RTGS DCAc in the grey SBAG as its subaccount is

Old figure 9 - Settlement Bank Account Group:



New figure 9 - Settlement Bank Account Group:



34 EUROSYSTEM UPDATE [internal review]: page 71 (RTGS UDFS chapter 3.4 Shared reference data)

Correction of the table name 11 to align with table 13 in CLM UDFS

Table 11 - ~~Number of business days where incoming messages are checked for duplicates~~ Attributes of the duplicate check

35 EUROSYSTEM UPDATE [internal review]: page 76 (RTGS UDFS chapter 4.2 RTGS schedule)

Detailed clarification, spelling correction

[...]

Events which are not time-based depend on the ~~occurrence~~ occurrence of the defined previous event and the completion of the associated processes. Events which are time-based depend on the ~~occurrence~~ occurrence of the defined previous event, the completion of the associated processes and the achievement of the defined point in time for this time-based event.

[...]

All times refer to Central European Time (CET) or Central European Summer Time (CEST), where applicable.³

36 EUROSISTEM UPDATE [internal review]: page 81 (RTGS UDFS chapter 4.4.1 Start-of-day period (18:45 – 19:30 CET))

Detailed clarification to be added under table 14

Table 14 - Events and processes during SoD

After the event CRTI "Start of CLM RTS" is reached in CLM (planned time 19:00 CET) incoming A2A immediate liquidity transfers orders will be parked in RTGS until RRTI "RTGS RTS I Period" starts (planned time 19:30 CET).

37 EUROSISTEM UPDATE [internal review]: page 84 (RTGS UDFS chapter 4.4.2.2 Settlement window for liquidity transfer orders)

Detailed clarification to be added in table 16

RTGS processes	Events and description of the processes
[...]	
Processing of immediate liquidity transfers	RTGS starts accepting and general processing of immediate liquidity transfers s orders and processes parked immediate liquidity transfer orders which are <u>were</u> entered <u>via A2A</u> after the CLM business day event "Start of CLM RTS" from RTGS Actors.

Table 16 - Events and processes at the start of settlement window for liquidity transfer orders

38 EUROSISTEM UPDATE [internal review]: page 85 (RTGS UDFS chapter 4.4.3 Maintenance window)

Detailed clarification

The non-optional maintenance window starts with the event "Start of non-optional maintenance window" at a planned time of 02:30 CET on the closing day, e.g. Saturday, and ends with the event "End of non-optional maintenance window" at a planned time of 02:30 CET on the next working day.

When activated, the optional maintenance window starts with the event "Start of optional maintenance window" at a planned time of 03:00 CET and ends with the event "End of optional maintenance window" at a planned time of 05:00 CET.

³ For reasons of simplification, only CET is used in the following sections of the document, without any additional indication of CEST, even though times always refer to either CET or CEST, depending on whether winter or summer time applies.

39 EUROSISTEM UPDATE [internal review]: page 90 (RTGS UDFS chapter 4.4.5 End-of-day period (18:00 – 18:45 CET))

Detailed clarification in table 21

RTGS processes/EoD cut-offs	Events and description of the processes
[...]	
Check of reference data	<u>After propagation of reference data for next business day:</u> Check of cash accounts to be closed as of the next business day with balance and processing of emergency liquidity transfer <u>towards the responsible CB</u> in case of need.
[...]	
Sending of general ledger to CLM	Upon request by CLM, RTGS sends a general ledger for all cash account in RTGS to CLM.
<u>Check final status of all business transactions</u>	<u>RTGS checks finality of all business transactions before closing the business day.</u>
EoD completed	[...]

Table 21 - Events and processes during EoD

40 EUROSISTEM UPDATE [ECB JIRA CSLD-1368]: page 116 (RTGS UDFS chapter 5.3.8 Payment order revocation and payment recall)

Reference to message chapter 11.4 included

[...]

Further information on the A2A processing is provided in chapters [Request payment order revocation or recall](#) and [Reject or confirm payment order recall](#).

For information on the matching elements between the revocation message and the message of the payment order to be revoked, see chapter [Message References](#).

41 EUROSISTEM UPDATE [internal review]: page 214 (RTGS UDFS chapter 5.5.3.5 Rule-based liquidity transfers due to queued payment orders or AS transfer orders)

Undo corrections of CR0076 as details for set up can be found in CRDM UDFS/UHB

~~The relevant CB can upon the relevant RTGS Account Holder's request can define~~ It can be defined in CRDM for each RTGS DCA that RTGS generates an inter-service liquidity transfer order in case an urgent payment order, an AS transfer order or an high priority payment order gets queued

42 EUROSISTEM UPDATE [ECB JIRA CSLD-1368]: page 270 (RTGS UDFS chapter 9.4.1 Description)

Reference to message chapter 11.4 included

[...]

Details on the payment order revocation or recall requests including two examples are provided in chapter

[Payment order revocation and payment recall.](#)

[For information on the matching elements between the revocation message and the message of the payment order to be revoked, see chapter \[Message References\]\(#\).](#)

43 EUROSYSYSTEM UPDATE [SDD-PBR-072]: page 390 (CLM UDFS chapter 11.1.3.1 Technical validation)

Add explanation for handling of namespace prefix to the end of the chapter.

[...]

[Regarding the use of namespace prefixes, RTGS does not encourage but accepts and processes valid inbound messages and inbound files composed of one or several messages containing those.](#)

[However, when sending outbound messages, RTGS does not re-use nor add namespace prefixes.](#)

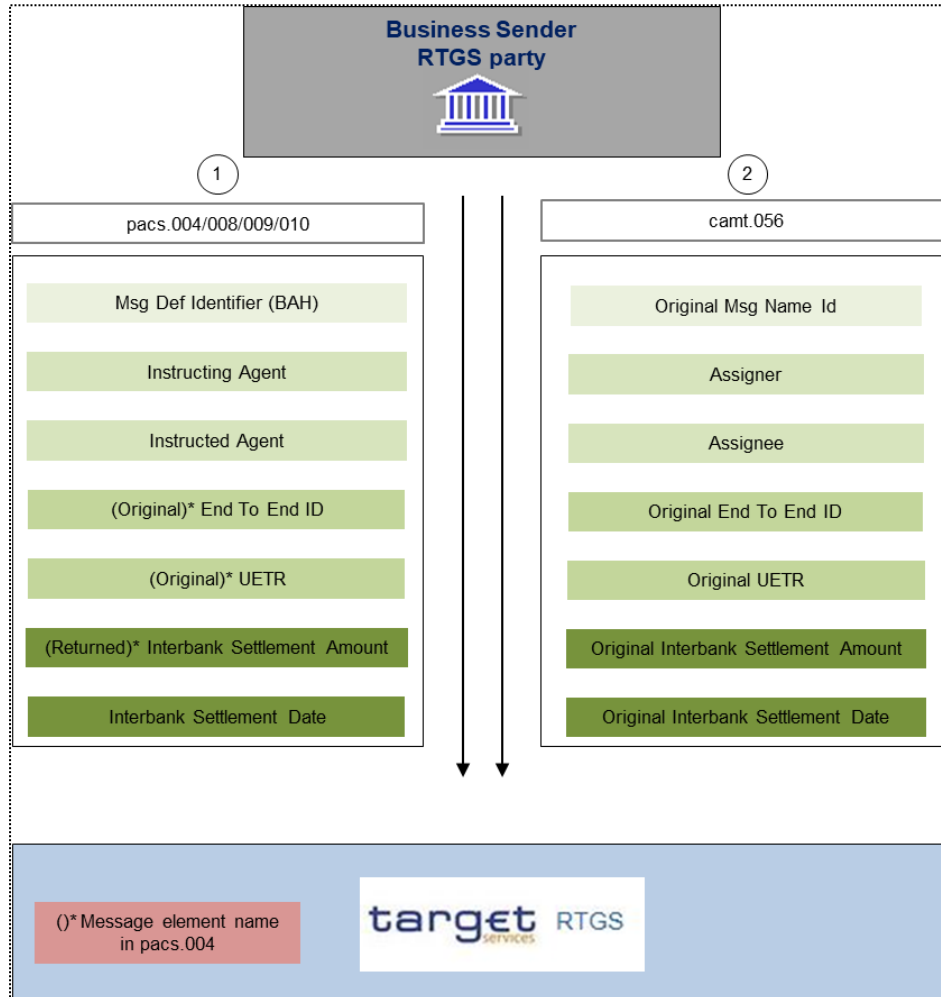
44 EUROSYSYSTEM UPDATE [ECB JIRA CSLD-1368]: page 406 (RTGS UDFS chapter 11.4 Message References)

Add text and additional diagram to show message elements mapping for payment order revocation

[...]

Figure 119 Message references

[The revocation of a payment order in RTGS is only possible when all the elements defined in the diagram below can be matched between the revocation message \(camt.056\) and the message of the payment order to be revoked \(pacs.004/008/009/010\).](#)

Figure xxx- Linking camt.056 and payment orders

If the payment order is in final status or RTGS cannot find an exact match, the camt.056 is forwarded by RTGS to the business receiver indicated in the BAH of the message for further investigation as a recall request (applicable to pacs.008/009 only).

Details for the revocation and recall of payment orders are outlined in chapter [Payment order revocation and payment recall](#).

45 EUROSYSYSTEM UPDATE [BBK JIRA CSLD-40682]: pages 430 and 432 (RTGS UDFS chapter 11.5 Business scenarios);

Renaming of samples

Business scenario	Overview	Message examples
[...]		
Scenario 541 – procedure C successful settlement		

	At 14:50 the AS sends a camt.021 to RTGS requesting the closure of the current settlement cycle. RTGS responds by sending a camt.021 to the AS, confirming that the cycle has been closed.	Inbound_camt.021_AS-C_ReturnGeneralBusinessInformation_DAY-CYCL-CLOS_bs541.xml Outbound_camt.021_AS-C_ReturnGeneralBusinessInformation_ DAY-CYCL-CLOS-LIQ-CYCL-END _bs541.xml
[...]		
Scenario 544 – procedure C partial settlement	An ancillary system starts an optional procedure C [...]	
	[...]	
	At 14:50 the AS sends a camt.021 to RTGS requesting the closure of the current settlement cycle. RTGS responds by sending a camt.021 to the AS, confirming that the cycle has been closed.	Inbound_camt.021_AS-C_ReturnGeneralBusinessInformation_DAY-CYCL-CLOS_bs544.xml Outbound_camt.021_AS-C_ReturnGeneralBusinessInformation_ DAY-CYCL-CLOS-LIQ-CYCL-END _bs544.xml
[...]		

Table 162 - Table of Business scenarios

46 EUROSISTEM UPDATE [SDD-PBR-073]: pages 509-510 (RTGS UDFS chapter 12.2.3.3 the message in business context); pages 527-528 (RTGS UDFS chapter 12.2.4.3 the message in business context); page 641 (RTGS UDFS chapter 12.2.20.3 the message in business context); page 652-654 (RTGS UDFS chapter 12.2.21.3 the message in business context);

Change the annotations for the reporting of Debtor and Creditor BICs in Liquidity Transfers

Message Item	Utilisation
[...]	
Search Criteria – Payment Search – Parties – Debtor Can be used either for search of BIC of <Debtor> in case of payment (order)s or AS transfer (order)s related to settlement procedure A, B, D or E if used in the cash transfer (order)s. Account number from <FirstAgentAccount> in case of AS transfer (order)s related to settlement procedure C. Account number from <DebtorAccount> in case of liquidity transfer (order)s.	
Debtor BIC /Document/GetTx/TxQryDef/TxCrit/NewCrit/SchCrit/PmtSch/Pties/Dbtr/Pty/Id/OrgId/AnyBIC	Can be used for search of BIC of <Debtor> in case of payment (order)s or AS transfer (order)s related to settlement procedure A, B, D or E if used in the cash transfer (order)s.
[...]	
Search Criteria – Payment Search – Parties – Creditor Can be used either for search of: BIC of <Creditor> in case of payment (order)s or AS transfer (order)s related to settlement procedure A, B, D or E if used in the cash transfer (order)s. Account number from <FinalAgentAccount> in case of AS transfer (order)s related to settlement procedure C, Account number from <CreditorAccount> in case of liquidity transfer (order)s.	

Creditor BIC /Document/GetTx/TxQryDef/TxCrit/NewCrit/SchCrit/P mtSch/Pties/Cdtr/Pty/Id/OrgId/AnyBIC	Can be used for search of BIC of <Debtor Creditor> in case of payment (order)s or AS transfer (order)s related to settlement procedure A, B, D or E <u>if used in the cash transfer (order)s.</u>
[...]	[...]

Table 195 - GetTransaction (camt.005)

Message Item	Utilisation
[...]	
Debtor BIC /Document/RtrTx/RptOrErr/BizRpt/TxRpt/TxOrErr/Tx/P mt/Pties/Dbtr/Pty/Id/OrgId/AnyBIC	Provides the BIC of <Debtor> in the case of payment (order)s or AS transfer (order)s related to settlement procedure A, B, D or E <u>if used in the cash transfer (order)s.</u>
[...]	
Creditor BIC /Document/RtrTx/RptOrErr/BizRpt/TxRpt/TxOrErr/Tx/P mt/Pties/Cdtr/Pty/Id/OrgId/AnyBIC	Provides the BIC of <Creditor> in the case of payment (order)s or AS transfer (order)s related to settlement procedure A, B, D or E <u>if used in the cash transfer (order)s.</u>
[...]	

Table 202 - ReturnTransaction (camt.006)

Message Item	Utilisation
[...]	
Debtor (Block) /Document/BkToCstmrStmt/Stmt/Ntry/NtryDtls/TxDtls/ RltdPties/Dbtr	Provided if debtor BIC or name is used in the payment order or AS transfer <u>cash transfer order.</u>
Debtor Account /Document/BkToCstmrStmt/Stmt/Ntry/NtryDtls/TxDtls/ RltdPties/DbtrAcct/Id/Othr/Id	For liquidity transfer: <ul style="list-style-type: none"> inter-service liquidity transfer: Debtor cash account number in the initiating settlement service; intra-service liquidity transfer: Debtor cash account number in RTGS. For AS transfer: Debtor cash account number of the debited AS settlement bank. Debtor sub-account number in case of AS procedure "C".
Creditor (Block) /Document/BkToCstmrStmt/Stmt/Ntry/NtryDtls/TxDtls/ RltdPties/Cdtr	Provided if creditor BIC or name is used in the payment order or AS transfer <u>cash transfer order.</u>
[...]	

Table 282 - BankToCustomerStatement (camt.053)

Message Item	Utilisation
[...]	
Amount /Document/BkToCstmrDbtCdtNtfctn/Ntfctn/Ntry/NtryDtl s/TxDtls/Amt	The original instructed amount from: <ul style="list-style-type: none"> the AS transfer order; the payment order; the liquidity transfer order;

	<ul style="list-style-type: none"> the standing order liquidity transfer as recorded in CRDM is provided.
Debtor (Block) /Document/BkToCstmrDbtCdtNtfctn/Ntfctn/Ntry/NtryDtl s/TxDtls/RltdPties/Dbtr	Provided if debtor BIC or name is used in payment of AS transfer <u>the cash transfer order.</u>
[...]	[
Creditor (Block) /Document/BkToCstmrDbtCdtNtfctn/Ntfctn/Ntry/NtryDtl TxDTls/RltdPties/Cdtr	Provided if creditor BIC or name is used payment of AS transfer <u>the cash transfer order.</u>
[...]	
Remittance Information Unstructured /Document/BkToCstmrDbtCdtNtfctn/Ntfctn/Ntry/NtryDtl s/TxDtls/RmtInf/Ustrd	Copy of <RemittanceInformation/Unstructured> from the AS <u>cash</u> transfer <u>order</u> is provided.

Table 284 - BankToCustomerDebitCreditNotification (camt.054)

47 EUROSISTEM UPDATE [BBK JIRA CSLD-40682]: page 587 and 591 (RTGS UDFS chapter 12.2.12.3 the message in business Context)

Change in example descriptions, correction in sample names and addition of 2 sample tables

Inbound - In this example, an ancillary system is requesting RTGS to close a current settlement cycle in an Optional Procedure C. The business reference is a copy of the value in the BAH BizMsgldr (Inc021b541-BAHId-3)

~~Outbound – RTGS is responding to this AS request to close a current settlement cycle with business reference of the original request (Inc021b541-BAHId-3).~~

Message item	Utilisation
Message ID /Document/RtrGnlBizInf/MsgHdr/Msgld	NONREF
[...]	

Table 235 - ReturnGeneralBusinessInformation (camt.021) – usage case procedure C successful settlement DAY-CYCL-CLOS (Scenario 541)

Outbound - In this example, RTGS is responding to the above AS request to close a current settlement cycle with business reference of the original request (Inc021b541-BAHId-3).

<u>Message item</u>	<u>Utilisation</u>
<u>Message ID</u> <u>/Document/RtrGnlBizInf/MsgHdr/Msgld</u>	<u>NONREF</u>
<u>Business Information Reference</u> <u>/Document/RtrGnlBizInf/RptOrErr/BizRpt/BizInfRef</u>	<u>Inc021b541-BAHId-3</u>
<u>General Business Qualifier</u> <u>/Document/RtrGnlBizInf/RptOrErr/BizRpt/GnlBizOrErr/</u> <u>GnlBiz/Qlfr/IsFrmt</u>	<u>true</u>
<u>General Business Subject</u> <u>/Document/RtrGnlBizInf/RptOrErr/BizRpt/GnlBizOrErr/</u> <u>GnlBiz/Sbjt</u>	<u>LIQ-CYCL-END</u>

Table xxx - ReturnGeneralBusinessInformation (camt.021) – usage case procedure C successful settlement

LIQ-CYCL-END (Scenario 541)

Usage case example:

Inbound_camt.021_AS-C_ReturnGeneralBusinessInformation_DAY-CYCL-CLOS_bs541.xml

Outbound_camt.021_AS-C_ReturnGeneralBusinessInformation_ ~~DAY-CYCL-CLOS~~ **LIQ-CYCL-END**_bs541.xml

[...]

Inbound - In this example, an ancillary system is requesting RTGS to close a current settlement cycle in an Optional Procedure C. The business reference is a copy of the value in the BAH BizMsgldr (Inc021b544-BAHId-3).

~~Outbound - RTGS is responding to this AS request to close a current settlement cycle with business reference of the original request (Inc021b544-BAHId-3).~~

Message item	Utilisation
Message ID /Document/RtrGnlBizInf/MsgHdr/Msgld	NONREF
[...]	[...]

Table 241 - ReturnGeneralBusinessInformation (camt.021) – usage case procedure C partial settlement DAY-CYCL-CLOS (Scenario 544)

~~Outbound - In this example, RTGS is responding to the above AS request to close a current settlement cycle with business reference of the original request (Inc021b544-BAHId-3).~~

<u>Message item</u>	<u>Utilisation</u>
<u>Message ID</u> <u>/Document/RtrGnlBizInf/MsgHdr/Msgld</u>	<u>NONREF</u>
<u>Business Information Reference</u> <u>/Document/RtrGnlBizInf/RptOrErr/BizRpt/BizInfRef</u>	<u>Inc021b544-BAHId-3</u>
<u>General Business Qualifier</u> <u>/Document/RtrGnlBizInf/RptOrErr/BizRpt/GnlBizOrErr/</u> <u>GnlBiz/Qualr/IsFrmt</u>	<u>true</u>
<u>General Business Subject</u> <u>/Document/RtrGnlBizInf/RptOrErr/BizRpt/GnlBizOrErr/</u> <u>GnlBiz/Sbjt</u>	<u>LIQ-CYCL-END</u>

Table xxx - ReturnGeneralBusinessInformation (camt.021) – usage case procedure C partial settlement LIQ-CYCL-END (Scenario 544)

Usage case example:

Inbound_camt.021_AS-C_ReturnGeneralBusinessInformation_DAY-CYCL-CLOS_bs544.xml

Outbound_camt.021_AS-C_ReturnGeneralBusinessInformation_ ~~DAY-CYCL-CLOS~~ **LIQ-CYCL-END**_bs544.xml

48 EUROSYSYSTEM UPDATE [internal review]: page 700ff (RTGS UDFS chapter 12.2.21.3 the message in business Context)

Correction of CR-076 where the short description of a business element didn't correspond to the xpaths, in business scenarios 581 and 582.

Message item	Utilisation
[...]	
Account Identification /Document/BkToCstmrDbtCdtNtfctn/Ntfctn/Acct/Id/Othr/Id	RDEEURUBSWCHZHXXXUBSWCHZHXXX
Account Owner /Document/BkToCstmrDbtCdtNtfctn/Ntfctn/Acct/Ownr/Id/OrgId/AnyBIC	UBSWCHZHXXX
[...]	
End-to-end identification /Document/BkToCstmrDbtCdtNtfctn/Ntfctn/Ntry/NtryDtls/TxDtls/Refs/EndToEndId	Inp998b581-E2EIdA
Transaction Amount /Document/BkToCstmrDbtCdtNtfctn/Ntfctn/Ntry/NtryDtls/TxDtls/Amt	EUR 89000.00
[...]	
Local Instrument <u>Proprietary Code</u> /Document/BkToCstmrDbtCdtNtfctn/Ntfctn/Ntry/NtryDtls/TxDtls/LclInstrm/Cd	ASTI

Table 314 - DebitNotification (camt.054) – procedure E successful settlement (Scenario 581)

Message item	Utilisation
[...]	
Account Identification /Document/BkToCstmrDbtCdtNtfctn/Ntfctn/Acct/Id/Othr/Id	RDEEURSOLA DESTXXXSOLADEST600
Account Owner /Document/BkToCstmrDbtCdtNtfctn/Ntfctn/Acct/Ownr/Id/OrgId/AnyBIC	SOLADESTXXX
[...]	
End-to-end identification /Document/BkToCstmrDbtCdtNtfctn/Ntfctn/Ntry/NtryDtls/TxDtls/Refs/EndToEndId	Inp998b581-E2EIdB
Transaction Amount /Document/BkToCstmrDbtCdtNtfctn/Ntfctn/Ntry/NtryDtls/TxDtls/Amt	EUR 81000.00
[...]	
Local Instrument <u>Proprietary Code</u> /Document/BkToCstmrDbtCdtNtfctn/Ntfctn/Ntry/NtryDtls/TxDtls/LclInstrm/Cd	ASTI

Table 315 - CreditNotification (camt.054) – procedure E successful settlement (Scenario 581)

Message item	Utilisation
[...]	
Account Identification /Document/BkToCstmrDbtCdtNtfctn/Ntfctn/Acct/Id/Othr/Id	RDEEURSOLA DESTXXXSOLADEST600
Account Owner /Document/BkToCstmrDbtCdtNtfctn/Ntfctn/Acct/Ownr/Id/OrgId/AnyBIC	SOLADESTXXX

[...]	
End-to-end identification /Document/BkToCstmrDbtCdtNtfctn/Ntfctn/Ntry/NtryDtl s/Tx Dtls/Refs/EndToEndId	Inp998b582-E2EIdA
Transaction Amount /Document/BkToCstmrDbtCdtNtfctn/Ntfctn/Ntry/NtryDtl s/TxDtls/Amt	EUR 90000.00
[...]	
Local Instrument <u>Proprietary-Code</u> /Document/BkToCstmrDbtCdtNtfctn/Ntfctn/Ntry/NtryDtl s/Tx Dtls/LclInstrm/Cd	ASTI

Table 316 - CreditNotification (camt.054) – procedure E successful settlement (Scenario 582)

Message item	Utilisation
[...]	
Account Identification /Document/BkToCstmrDbtCdtNtfctn/Ntfctn/Acct/Id/Oth r/Id	RDEEURSOLA DESTXXXSOLADEST861
Account Owner /Document/BkToCstmrDbtCdtNtfctn/Ntfctn/Acct/Ownr/I d/OrgId/AnyBIC	SOLADESTXXX
[...]	
End-to-end identification /Document/BkToCstmrDbtCdtNtfctn/Ntfctn/Ntry/NtryDtl s/Tx Dtls/Refs/EndToEndId	Inp998b582-E2EIdD
Transaction Amount /Document/BkToCstmrDbtCdtNtfctn/Ntfctn/Ntry/NtryDtl s/TxDtls/Amt	EUR 92000.00
[...]	
Local Instrument <u>Proprietary-Code</u> /Document/BkToCstmrDbtCdtNtfctn/Ntfctn/Ntry/NtryDtl s/Tx Dtls/LclInstrm/Cd	ASTI

Table 317 - DebitNotification (camt.054) – procedure E successful settlement (Scenario 582)

49 EUROSYSYSTEM UPDATE [SDD-PBR-069]: page 710 (RTGS UDFS chapter 12.2.22.3 the message in business Context)

Remove “Original” from xpath in annotation

Message item	Utilisation
[...]	
Original Interbank Settlement Date /Document/FIToFIPmtCxlReq/Undrlyg/TxInf/OrgnlIntr BkSttlmDt	In the case where camt.056 is used to revoke a pacs.004 message, the original interbank settlement date must be copied from pacs.004/TransactionInformation/ <u>Original</u> InterbankSettl ementDate.
[...]	

Table 318 - FIToFIPaymentCancellationRequest (camt.056)

CLM UHB

**50 EUROSYSYSTEM UPDATE [SDD-CN-PBR-060]: page 167 (CLM UHB chapter 5.1.22
Statement of Account – Download Screen)**

SDD CN PBR-060 describes the changes to the GUI access to the statement of account screen regarding A2A parties. The UHB has to be adapted accordingly.

Note: The listed updates will be incorporated into the first UHB version after the CSLD go-live.

Context of Usage

This screen offers the possibility to query a statement of account by specifying different attributes for a [U2A only CLM Account Holder](#) [or an A2A CLM Account Holder](#).

The result can be downloaded by clicking the 'Download' button. The statement of account will be a '.pdf' file containing an unstructured camt.053 XML string of the selected account and business day as stored in CLM when produced at the end of the day.

[For A2A parties, only the last generated statement of account file can be downloaded.](#)

[\[Update of screenshot\]](#)

Field descriptions:

Statement of Account – Download Screen – General	
Party BIC*	This field requires the user to enter a party BIC. If the user is associated with exactly one party, this field is pre-filled with the BIC of the respective party. If the user is associated with more than one party, this field is not pre-filled. In this case, the user can enter the party BIC manually or search for it by clicking on the smart-select button and opening the Party Reference Data – Query Screen as a pop-up. Required format: 8 or 11 characters
Account Number	<p>This field offers the possibility to restrict the result list to an account statement by entering a specific account number.</p> <p>If the user only has one single account, this field is pre-filled with the account number of the current user. This value can be overwritten.</p> <p>If the user has more than one account, this field is not pre-filled. In this case, the user can enter an account number manually or search for it by clicking on the smart-select button and opening the Cash Account Reference Data – Query Screen as a pop-up.</p> <p>Required format: up to 34 characters – with the following additional restrictions to the input value:</p> <ul style="list-style-type: none"> • Must not start or end with a space, but may have space/s within the middle • Must not start or end with a slash • May contain slashes within the middle, but not more than one consecutive slash
Account BIC	<p>This field offers the possibility to restrict the result list to an account statement by entering the account BIC.</p> <p>If the user only has one single account, this field is pre-filled with the account BIC of the current user. This value can be overwritten.</p> <p>If the user has more than one account, this field is not pre-filled. In this case, the user can enter an account</p>

	BIC manually or search for it by clicking on the smart-select button and opening the BICs – Query Screen as a pop-up. Required format: 8 or 11 characters
Business Date	This field offers the possibility to select one business day to query the statement of account. The statement of account can be queried for the last 10 business days. <u>This field is not available for A2A parties.</u>

51 EUROSYSYSTEM UPDATE [SDD-CN-PBR-060]: page 477 (CLM UHB chapter 6.1.14 Download statement of account)

SDD CN PBR-060 describes the changes to the GUI access to the statement of account screen regarding A2A parties. The UHB has to be adapted accordingly.

Note: The listed updates will be incorporated into the first UHB version after the CSLD go-live.

Context of Usage

This use case describes how to query an account statement and download the result list based on the selected filter criteria.

U2A only parties are able to query statement of accounts for the previous ten business days while A2A parties are only able to query the statement of account for the last day.

[...]

[Infobox]

Pre-filled account and party information

If the user has only one single account, the sections fields 'Account Number' and 'Account BIC' are pre-filled with the account information of the current user. However, if the user is connected to more than one account (e.g. co-manager) both fields are not pre-filled. In this case, the user can enter an account number or account BIC manually or search for it by clicking on the smart-select button and opening the respective reference data screen as a pop-up.

If the user is associated with exactly one party, the field 'Party BIC' field is pre-filled with the BIC of the respective party.

CRDM UDFS

52 EUROSYSYSTEM UPDATE [Internal review]: page 33 (CRDM UDFS-chapter 1.2.2.1.2 Privilege)

Update of list of privileges of table 13 – CLM functions and table 14 RTGS functions

PRIVILEGE	USER FUNCTION	DATA SCOPE
CLM Query Account Balance	Account Balance Query	Cash accounts within own System Entity (for CB) or owned by own or co-managed Party (for Payment Bank); <u>only A2A</u>
[...]		
CLM Download Statement of Account	Download Statement of Account	Cash accounts within own System Entity (for CB) or owned by own or co-managed Party (for Payment Bank)
[...]		
CLM Delete Current Reservation	Delete Current Reservation	Reservations defined on cash accounts within own System Entity (for CB) or owned by own Party (for Payment Bank); <u>only A2A</u>
[...]		
CLM Create, Modify Seizure of Funds	Create, Modify Seizure of Funds	Reservations defined on cash accounts within own System Entity (for CB); <u>only U2A</u>
CLM Query Cash Transfer Order Audit Trail	Cash Transfer Order Audit Trail Query	All cash transfer orders on cash accounts within own System Entity (for CB) or owned by own or co-managed Party (for CLM account holder or CB account holder)
CLM Query Cash Transfer	Query and <u>List</u> Cash Transfer	All cash transfer orders on cash accounts within own System Entity (for CB) or owned by own or co-managed Party (for CLM account holder or <u>CLM</u> CB account holder); <u>only U2A</u>
[...]		
CLM Query File	Query and List Files, File Details <u>of File</u>	All files for own System Entity (for CB) or for owned <u>ed</u> or co-managed Party (for CLM account holder or CB account holder).
CLM Query Message	CLM Query and List Message	All messages for own System Entity (for CB) or for owned <u>ed</u> or co-managed Party (for CLM account holder or CB account holder)
CLM Query Message Detail	CLM Query Message Detail	All messages for own System Entity (for CB) or for owned <u>ed</u> or co-managed Party (for CLM account holder or CB account holder); <u>only U2A</u>
CLM Query Task queue	CLM Query and List Task queue	All tasks for own System Entity (for CB) or for owned <u>ed</u> or co-managed Party (for CLM account holder or CB account holder); <u>only U2A</u>
CLM Query Task Queue Detail	Query Task Queue Detail	All tasks for own System Entity (for CB) or for owned <u>ed</u> or co-managed Party (for CLM account holder or CB account holder); <u>only U2A</u>
[...]		
CLM Query Credit Line List	CLM Query and Display Credit Line List	Cash Aa accounts within own System Entity (for CB); <u>only U2A</u>
[...]		

CLM Initiate Immediate Liquidity Transfer	CLM Initiate Immediate Liquidity Transfer	Cash accounts within own System Entity (for CB) or owned by own or co-managed Party (for CLM account holder or CB account holder)
[...]		
CLM Query System Time	CLM Query System Time	Current time of the system); only <u>A2A</u>
CLM Agree/Disagree Cash Transfers	CLM Agree/Disagree earmarked Cash Transfers	All cash transfers on Cash Accounts within own System Entity (for CB); only <u>U2A</u>
CLM Query Business Case	CLM Query Business Case, List of Business Case s	All cash transfers on Cash Accounts within own System Entity (for CB); only <u>U2A</u>
[...]		
CLM Query and List Minimum Reserve Requirement	CLM Query and List, List minimum reserve R Requirement	Cash Accounts within own System Entity (for CB).
CLM Modify Minimum Reserve Requirement	CLM Modify M minimum R reserve Requirement	Cash Accounts within own System Entity (for CB).
CLM Query and List Minimum Reserve Fulfilment	CLM Query and List Minimum Reserve Fulfilment	Cash Accounts within own System Entity (for CB); only <u>U2A</u>
[...]		
CLM Query of Minimum Reserve Infringements	CLM Query and list minimum reserve infringements	Cash Accounts within own System Entity (for CB); only <u>U2A</u>
CLM Administrate Minimum Reserve Penalty	CLM Administrate Minimum Reserve Penalty	Cash Accounts within own System Entity (for CB); only <u>U2A</u>
CLM Query local party reference data	CLM Query, list party reference data	Local Party Reference data within own System Entity (for CB) or belonging to own Cash Accounts, co-managed Cash Accounts or Cash Accounts within own Account Monitoring Group (for Payment Bank); only <u>U2A</u>
CLM Query local party cash account reference data	CLM Query, list cash account reference data	Local Cash Account Reference data within own System Entity (for CB) or belonging to own Cash Accounts, co-managed Cash Accounts or Cash Accounts within own Account Monitoring Group (for Payment Bank); only <u>U2A</u>
CLM Query BIC_data	CLM Query Local BIC data	V isible for all P arties; only <u>U2A</u>
CLM Query local reference data by MFI	CLM Query, list of local reference data by MFI	Reference data within own System Entity (for CB); only <u>U2A</u>
CLM Query broadcast	CLM Query, list and display details of broadcast	All broadcasts for Parties within own System Entity (for CB) or own Party (for Ancillary System/Payment Bank); only <u>U2A</u>
CLM New broadcast	CLM Create a new broadcast	Cash Accounts within own System Entity (for CB) and Operator; only <u>U2A</u>
CLM Query Monitoring Screens " Display Liquidity on CB Level"	Query, list and display details of the CB monitoring screens " Display Liquidity on CB Level"	Cash Accounts within own System Entity (for CB); only <u>U2A</u>

CLM Query Monitoring Screen "List of Sum of Cash Transfers per Account Holder"	Query, list and display of CB monitoring Screen "Sum of Cash Transfers per Transfer Order Totals by Party/Account Holder"	Cash Accounts within own System Entity (for CB), Operator: only U2A
CLM Query Monitoring Screens "Available Liquidity by Party Level" and "Available Liquidity by Account"	Query, list and display of CB monitoring Screens "Available Liquidity by Party Level" and "Available Liquidity by Account"	Cash Accounts within own System Entity (for CB), Operator: only U2A
CLM Query Monitoring Screen "Reservations and dedicated Liquidity"	Query, list and display of CB monitoring Screen "Reservations and dedicated Liquidity Seizure of Funds"	Cash Accounts within own System Entity (for CB), Operator: only U2A
CLM Query Monitoring Screens "List of Available Liquidity on Banking Group Level" and "List of Detailed Available Liquidity on Banking Group Level"	Query, list and display of CB monitoring Screens "List of Available Liquidity on Banking Group Level", List of Detailed Available Liquidity on Banking Group Level" and "Query Dashboard Liquidity Overview"	Cash Accounts within own System Entity (for CB), Operator: only U2A
CLM Query Monitoring Screen "Available Liquidity on Party Level"	Query, list and display of CB monitoring Screen "Available Liquidity per Party Level"	Cash Accounts within own System Entity (for CB), Operator
CLM Query Monitoring Screen "Status Overview for Cash Transfers"	Query, list and display of CB monitoring Screen "Status Overview on Cash Transfers"	Cash Accounts within own System Entity (for CB), Operator: only U2A
CLM Query Monitoring Screen "Warehoused Cash Transfers"	Query, list and display of CB monitoring Screen "Warehoused Cash Transfers"	Cash Accounts within own System Entity (for CB), Operator: only U2A
CLM Query Monitoring Screen "Standing Facilities per Account Holder"	Query, list and display of CB monitoring Screen "Standing Facilities per Account Holder"	Cash Accounts within own System Entity (for CB), Operator: only U2A
CLM Query Monitoring Screen "Minimum Reserve Information per Account Holder"	Query, list and display of CB monitoring Screen "Minimum Reserve Information per Account Holder"	Cash Accounts within own System Entity (for CB), Operator: only U2A
[...]		
CLM Upload DMT File	Upload DMT Files in U2A	Cash Accounts within own System Entity (for CB),
CLM Upload File U2A in contingency situation	CLM Upload File U2A in contingency situation	Cash Accounts within own System Entity (for CB) ; <u>only U2A</u>

CLM Activate Monitoring Screens for Crisis Situations	a Activation on Screens in of crisis situation in screens "Display Liquidity on CB Level" or "List of Available Liquidity on Banking group Level" from the operator	Operator only; <u>only U2A</u>
CLM Query/List Display System Parameter	CLM Query/List Display System Parameter	All party users <u>CB user</u> for a specific currency-; <u>Operator for all currencies; only U2A</u>
CLM Modify System Parameter	CLM Change System Parameter	Operator only; <u>only U2A</u>
<u>CLM</u> Upload General Ledger File from other Services	Upload General Ledger File from other Services	Operator only; <u>only U2A</u>
CLM Repeat Sending	Repeat Sending for internal messages to RTGS, T2S and TIPS	<u>TAH user for a specific currency;</u> Operator <u>for all currencies; only U2A;</u> only U2A
CLM Simulate Receipt from other Services	Simulate Receipt related to business cases from other Services	<u>TAH user for a specific currency;</u> Operator <u>for all currencies; only U2A;</u> only U2A
CLM Manual Reversal Booking other Services	Manual Reversal Booking related to messages from other Services	<u>TAH user for a specific currency;</u> Operator <u>for all currencies; only U2A;</u> only U2A
<u>CLM Initiate Marginal Lending on Request Reversal</u>	<u>CLM Initiate Marginal Lending on Request Reversal</u>	<u>Operator only; only U2A</u>
<u>CLM Skip coordinate General Ledger processing with other Services</u>	<u>CLM Skip coordinate General Ledger processing with other Services (for EoD)</u>	<u>Operator only; only U2A</u>
<u>CLM Download Migration Information</u>	<u>CLM Download Migration Information</u>	<u>Unmapped TARGET2 accounts within own System Entity (for CB); only relevant for migration; only U2A</u>
<u>CLM Skip CRDM Data Loading</u>	<u>CLM Skip CRDM Data Loading</u>	<u>Operator only; only U2A</u>
<u>CLM Administrate Migration Information</u>	<u>CLM Administrate Migration Information (upload of migration data provided by CBs; start the migration of CSLD go-live)</u>	<u>Operator only; only U2A</u>
CLM Query/List Events	CLM Query/List Events	All party users for a specific currency.
[...]		

RTGS Query Account Balance	RTGS Query Account Balance <u>in screens</u> <u>"Query/Display RTGS Cash Account Liquidity"</u> and <u>"Display RTGS Sub-Account Liquidity"</u>	Cash accounts within own System Entity (for CB) or owned by own Party (for Payment Bank and Ancillary System)
RTGS Query Account Statement	RTGS Query Account Statement	Reports relevant for requesting party (as set up in CRDM Report C onfiguration).
RTGS Download Statement of Account	RTGS Download Statement of Account	Cash accounts within own System Entity (for CB) or owned by own Party (for Payment Bank); <u>only U2A</u>
RTGS Ancillary System Procedure C Cycle – Start/ <u>End</u> of Cycle (ReturnGeneralBusinessInformation)	RTGS Ancillary System Procedure C Cycle – Start/ <u>End</u> of Cycle (ReturnGeneralBusinessInformation)	For Ancillary Systems for their own cycles and CBs related to AS within their own community (only relevant for settlement procedure C).
[...]		
RTGS Delete Current Limit	Delete Current Limit	Limits defined on RTGS Dedicated Cash Accounts within own System Entity (for CB) or owned by own Party (for RTGS account holder); <u>only A2A</u>
RTGS Delete Current Reservation	Delete Current Reservation	Reservations defined on cash accounts within own System Entity (for CB) or owned by own Party (for Payment Bank); <u>only A2A</u>
RTGS Invoke Guarantee Processing	RTGS Invoke Guarantee Processing	Cash accounts within own System Entity (for CB) or owned by Ancillary System or owned by own Party (for RTGS account holder); <u>only A2A</u>

RTGS Liquidity Adjustment (Ancillary System Settlement Procedure D)	RTGS Liquidity Adjustment (Ancillary System Settlement Procedure D)	Cash accounts within own System Entity (for CB) or owned by AS Settlement Bank; <u>only A2A</u>
RTGS Modify Cash Transfer Order	RTGS Modify Cash Transfer Order	All C cash Transfer Orders on cash accounts within own System Entity (for CB) or owned by own Party (for RTGS account holder or CB account holder)
[...]		
RTGS Query Cash Transfer Audit Trail	RTGS Query Cash Transfer Order Audit Trail	All cash transfers on cash accounts within own System Entity (for CB) or owned by own Party (for RTGS account holder or CB account holder); Ancillary System can only query AS Transfer Orders sent by themselves or sent by CB on behalf.
RTGS Query Cash Transfer	Query and List RTGS Cash Transfer Order	All cash transfers on cash accounts within own System Entity (for CB) or owned by own Party (for RTGS/CB account holder and RTGS CB account holder) Ancillary System can only query AS Transfer Orders sent by themselves or sent by CB on behalf but Ancillary System (or their CB on behalf) can additionally query AS Transfer Orders from batches when the Ancillary System is connected to the batch as Counterpart-AS in case of Cross-AS-Business.
[...]		

RTGS Query File	Query and List RTGS Files	All files for own System Entity (for CB) or for owned Party (for RTGS account holder or CB account holder or Ancillary System); only U2A
[...]		
RTGS Query Task Queue	Query and List RTGS task queue	All tasks for own System Entity (for CB) or for owned Party (for RTGS account holder, CB account holder or Ancillary Systems); only U2A
RTGS Query Task Queue Detail	RTGS Query Task Queue Detail	All tasks for own System Entity (for CB) or for owned Party (for RTGS account holder, CB account holder or Ancillary Systems); only U2A
RTGS Revoke payment Order	RTGS Revoke payment Order	All payments on cash accounts within own System Entity (for CB) or owned by own Party (for RTGS account holder or CB account holder); only U2A
RTGS Revoke or Recall Cash Transfer	RTGS Revoke cash transfer	All cash transfers on cash accounts within own System Entity (for CB) or owned by own Party (for RTGS account holder or CB account holder); only A2A
RTGS Send Respond Recall Request as Counterparty	RTGS Send Respond Recall Request as Counterparty	Cash accounts within own System Entity (for CB) or owned by own Party (for RTGS account holder); only A2A
RTGS Send Customer credit transfers(except mandated payments)	RTGS Initiate Customer payment (except mandated)	Cash accounts within own System Entity (for CB) or owned by own Party (for RTGS account holder); only A2A

RTGS Send Direct Debit	RTGS Initiate <u>Send</u> Direct Debit payment	Cash accounts within own System Entity (for CB) or owned by own Party (for RTGS account holder or CB account holder); <u>only A2A</u>
RTGS Send Financial Institution Credit Transfer (except mandated payments)	RTGS Send Financial Institution Credit Transfer (except mandated payment)	Cash accounts within own System Entity (for CB) or owned by own Party (for RTGS account holder or CB account holder or Ancillary System); <u>only A2A</u>
RTGS Enter e <u>C</u> ustomer Credit Transfer	RTGS Enter e <u>C</u> ustomer Credit Transfer (except mandated payment)	Cash accounts within own System Entity (for CB) or owned by own Party (for RTGS account holder); <u>only U2A</u> This privilege cannot be combined with the privilege "RTGS Enter Exceptional Customer Credit Transfer"
[...]		
RTGS Enter Financial Institution Credit Transfer (except mandated payments)	RTGS Enter Financial Institution Credit Transfer (except mandated)	Cash accounts within own System Entity (for CB) or owned by own Party (for RTGS account holder or CB account holder or Ancillary System); <u>only U2A</u> This privilege cannot be combined with the U2A privilege 'RTGS Enter Exceptional Financial Institution Credit Transfer'.
[...]		
RTGS Send Settlement Bank Transfer Initiation	RTGS Initiate SBTI	Cash accounts within own System Entity (for CB) or owned by own Party (for RTGS account holder); <u>only A2A</u>
[...]		

RTGS Send new AS Transfer Initiation	RTGS Initiate <u>Send</u> new AS Transfer Initiation	Ancillary system for their Settlement Bank Account Group or CB (when AS belongs to their community); <u>only A2A</u>
[...]		
RTGS Query System Time	RTGS Query System Time	Current time of the system; <u>only A2A</u>
[...]		
RTGS Agree/Disagree Cash Transfers	RTGS Agree/Disagree AS Batches on Procedure A and B with Group Status "Stopped due to Blocking" RTGS Agree/Disagree earmarked Cash Transfers	AS Batches of Procedure A and Procedure B with Group Status "Stopped due to blocking" within own System Entity (for CB); <u>only U2A</u> ; All cash transfers on Cash Accounts within own System Entity (for CB); <u>only U2A</u>
RTGS Query Business Case	RTGS Query Business Case, List Business Case,	All cash transfers on Cash Accounts within own System Entity (for CB); <u>only U2A</u>
[...]		
RTGS Query broadcast	RTGS Query, list and display details of broadcast	All broadcasts for Parties within own System Entity (for CB) or own Party (for Ancillary System/Payment Bank); <u>only U2A</u>
RTGS New broadcast	RTGS create a new broadcast	Cash Accounts within own System Entity (for CB) and Operator; <u>only U2A</u>
[...]		
RTGS Query BIC Data	RTGS Query and List Local Directory Data	Local Reference Data (Financial Institution Name and BIC from the BIC Data); <u>only U2A</u>

RTGS Query and List allowed and used amount Direct Debit	Query and List allowed and used amount Direct Debit	Local Cash Account Reference data within own System Entity (for CB) or belonging to own Cash Accounts or Cash Accounts within own Account Monitoring Group (for Payment Bank); <u>only U2A</u>
RTGS Upload DMT File in U2A	RTGS Upload DMT File in U2A	Cash Accounts within own System Entity (for CB)
RTGS Upload Files in U2A	RTGS Upload Files in U2A	CBs for all A2A messages they are entitled to send; <u>only U2A</u>
RTGS Activate/Deactivate Exceptional Credit Transfer Functionality	RTGS Activate/Deactivate Exceptional Credit Transfer Functionality	RTGS Accounts Holder within own System Entity (for CB) {CSLD CR0044}
RTGS Activate/Deactivate Value Date Check	RTGS Activate/deactivate value date check	Cash Accounts within own System Entity (for CB); <u>only U2A</u>
RTGS Query Monitoring Screen "List of Sum of Cash Transfers per Account Holder "	RTGS Query Monitoring Screen "Query/List of <u>Sum Cash Transfer Order Totals by Party</u> " and "List of Cash Transfers <u>Order Totals by per Account Holder</u> "	Cash Accounts within own System Entity (for CB); <u>only U2A</u>
RTGS Query Monitoring Screen "Available Liquidity per Account Holder"	RTGS Query Monitoring Screens "Available Liquidity per" "Query/List of <u>RTGS Liquidity by Party</u> ", "List of <u>RTGS Liquidity by Account Holder</u> "	Cash Accounts within own System Entity (for CB); <u>only U2A</u>
RTGS Query Monitoring Screen "Reservations and Dedicated Liquidity"	RTGS Query Monitoring Screen "List of Reservations and Dedicated Liquidity"	Cash Accounts within own System Entity (for CB); <u>only U2A</u>
RTGS Query Monitoring Screen "Status Overview for Cash Transfers"	RTGS Query Monitoring Screens "List of Cash Transfer Orders by Status Overview for Cash Transfers" and "List of Cash Transfer Orders Subtotals by Status"	Cash Accounts within own System Entity (for CB); <u>only U2A</u>
RTGS Query Monitoring Screen "Warehoused Cash Transfers"	RTGS Query Monitoring Screen "Warehoused Cash Transfers"	Cash Accounts within own System Entity (for CB); <u>only U2A</u>
RTGS Query Monitoring Screen "Pending Payment by Priority"	RTGS Query Monitoring Screen "Pending Payment Screens" "Query/List of <u>Queued Cash Transfer Orders</u> by Priority"	Cash Accounts within own System Entity (for CB); <u>only U2A</u>
RTGS Query Monitoring Screen "Status Overview for AS Batches"	RTGS Query Monitoring Screen "Status Overview for AS Batches"	Cash Accounts within own System Entity (for CB); <u>only U2A</u>

RTGS Query/ <u>List Monitoring</u> Screen "Algorithm result" and RTGS Display <u>Algorithm Parameter</u>	RTGS Query Monitoring Screen "Algorithm result" and RTGS Display <u>Algorithm Parameter</u>	Operator only: <u>only</u> <u>U2A</u>
[...]		
RTGS Simulate Receipt from other services	RTGS Simulate Receipt related to business cases from other services	<u>TAH user for a</u> <u>specific currency;</u> Operator <u>for all</u> <u>currencies; only</u> <u>U2A;</u> only U2A
RTGS Repeat Sending	<u>RTGS</u> Repeat Sending for internal messages to CLM, T2S and TIPS	<u>TAH user for a</u> <u>specific currency;</u> Operator <u>for all</u> <u>currencies; only</u> <u>U2A;</u> only U2A
RTGS Manual Reversal Booking other Services	<u>RTGS</u> Manual Reversal Booking related to messages from other Services	<u>TAH user for a</u> <u>specific currency;</u> Operator <u>for all</u> <u>currencies; only</u> <u>U2A;</u> only U2A
[...]		
RTGS AS Query "Liquidity of sub- account/guarantee/technical account <u>s</u> "	RTGS AS Query "Liquidity of sub- account/guarantee/technical account"	Sub-accounts, guarantee account and technical account within Settlement Bank Group of AS and AS within own System Entity (for CB).

53 EUROSYSYSTEM UPDATE [Internal review]: page 72 (CRDM UHB-chapter 2.3.1.3 Party – New/Edit Screen)

Amendment of Market Specific Attributes and Restriction for Parties

Market Specific Attributes (For T2S only)	
Attribute Name	Enter <u>or select</u> the name of the market-specific attribute related to the party. Required format is: max. 35x characters
Attribute Value	Enter <u>or select</u> the value of the market-specific attribute related to the party. Required format is: max. 350x characters

Party Restriction List	
Restriction	<u>Enter or S</u> select a restriction type from the suggested items in the drop-down menu. If Valid From is entered, this field is mandatory.
[...]	

54 EUROSYSYSTEM UPDATE [Internal review]: page 133 (CRDM UHB-chapter 2.3.2.4 Limits – Search/List Screen)

Removal of button “Limit Utilisation”

Buttons

[...]	
CMB Details	This function enable the user to enter the T2S CMB related to the selected Limit.
Limit Utilisation	This function enable the user to display the “Limit Utilisation” screen. This button is for T2S only.

55 EUROSYSYSTEM UPDATE [Internal review]: page 199 (CRDM UHB-chapter 2.3.3.15 Grant/Revoke Role – New/Edit Screen)

Amendment of Context of usage and Screenshots

Context of Usage

This screen contains a number of fields regarding roles. You can grant new roles to users or parties or revoke those that have been previously granted. You can use this screen either in 2-eyes or in 4-eyes mode.

This screen gives also the possibility to select the Parties/Roles/Users that can be granted or the current granted Parties/Roles/Users that can be revoked. It is possible to select one single Party/Role/User at time or all the Parties/Roles/Users of a list at once.

Screenshot

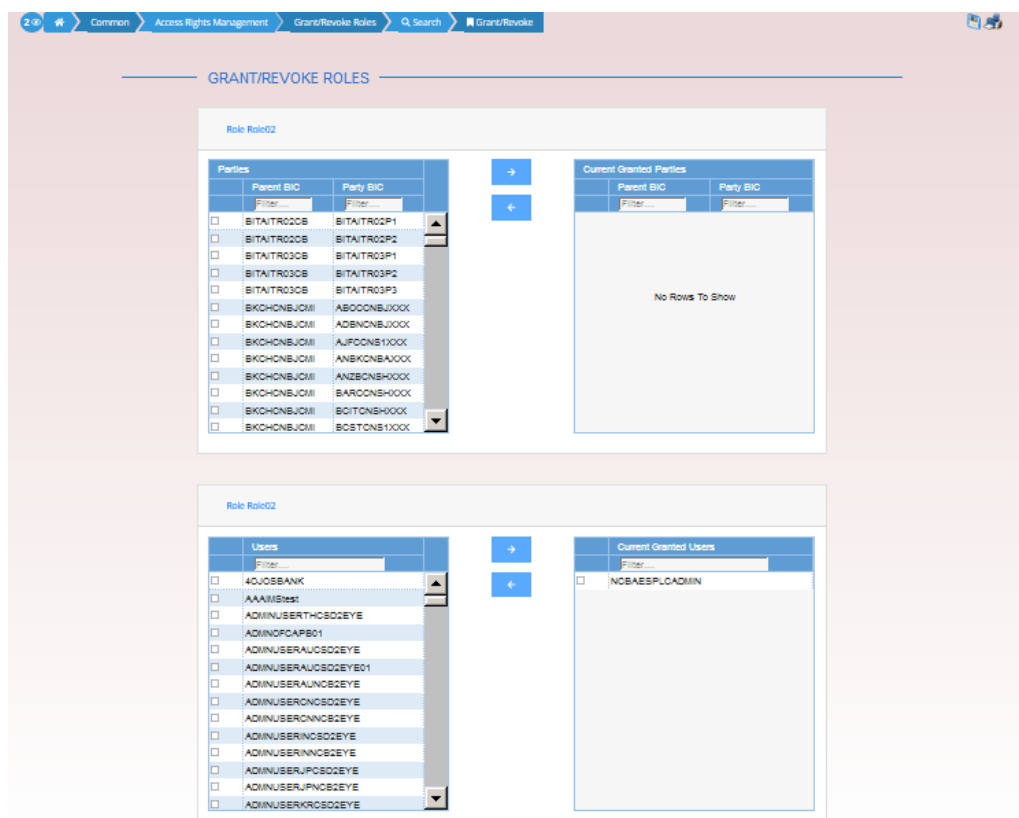


Illustration 5: Grant/Revoke role – edit screen (role mode)

GRANT/REVOKE ROLES

Party TCSOTCS0XXX - NCBXITRR001

Roles	Current Granted Roles
Filter...	Filter...
<input type="checkbox"/> PDM Role	<input type="checkbox"/> National Service Desk (NCB)
<input type="checkbox"/> PH - Admin DSA	<input type="checkbox"/> Reading role
<input type="checkbox"/> PH - Admin DSS	<input type="checkbox"/> RoleDMTTest
<input type="checkbox"/> PH - DMT Role	
<input type="checkbox"/> PM A2A Test	
<input type="checkbox"/> PM ADM Test	
<input type="checkbox"/> PM Admin CTS Test	
<input type="checkbox"/> PM CDM Test	
<input type="checkbox"/> PM OPS EFI Test	
<input type="checkbox"/> PROD Admin DSA	
<input type="checkbox"/> Party Administrator	
<input type="checkbox"/> ROLECBMT	
<input type="checkbox"/> ROLEFCB	
<input type="checkbox"/> ROLEFCS	

Illustration 6: Grant/Revoke role – edit screen (party roles mode)

GRANT/REVOKE ROLES

User N8IT NCB Admin1

Roles	Current Granted Roles
Filter...	Filter...
<input type="checkbox"/> PB Reading Role	<input type="checkbox"/> Advanced Access rights admin
<input type="checkbox"/> PB System Entity Role	<input type="checkbox"/> National Service Desk (NCB)
<input type="checkbox"/> PBx-AT(8) Role 1	<input type="checkbox"/> Party Administrator
<input type="checkbox"/> PDM Role	<input type="checkbox"/> Reading role
<input type="checkbox"/> PH - Admin DSA	<input type="checkbox"/> RoleDMTTest
<input type="checkbox"/> PH - Admin DSS	
<input type="checkbox"/> PH - DMT Role	
<input type="checkbox"/> PM A2A Test	
<input type="checkbox"/> PM ADM Test	
<input type="checkbox"/> PM Admin CTS Test	
<input type="checkbox"/> PM CDM Test	
<input type="checkbox"/> PM OPS EFI Test	
<input type="checkbox"/> PROD Admin DSA	
<input type="checkbox"/> ROLECBMT	

Illustration 7: Grant/Revoke role – edit screen (user roles mode)

56 EUROSYSYSTEM UPDATE [Internal review]: page 390 (CRDM UHB-chapter 2.4.2.9 Billing Group – Search/List Screen)

Addition of Payment Bank as party type eligible as Leader Party

Billing Group – List	
Status	Shows the status of the group.
Group Name	Shows the name of the Billing Group.
Leader Parent BIC	Shows the parent BIC of the party leader of the group. The Leader Party must be a Central Bank <u>or a Payment Bank</u> .

Leader Party BIC	Shows the BIC of the party leader of the group. The Leader Party must be a Central Bank <u>or a Payment Bank</u> .
------------------	---

RTGS UHB

**57 EUROSISTEM UPDATE [SDD-CN-PBR-060]: page 183 (RTGS UHB chapter 5.1.21
Statement of Account – Download Screen)**

SDD CN PBR-060 describes the changes to the GUI access to the statement of account screen regarding A2A parties. The UHB has to be adapted accordingly.

Note: The listed updates will be incorporated into the first UHB version after the CSLD go-live.

Context of Usage

This screen offers the possibility to query a statement of account by specifying different attributes for a [U2A only RTGS Account Holder](#) [or an A2A Account Holder](#).

The result can be downloaded by clicking on the 'Download' button. The statement of account will be a '.pdf' file containing an unstructured camt.053 XML string of the selected account and business day as stored in RTGS when produced at the end of the day.

[For A2A parties, only the last generated statement of account file can be downloaded.](#)

[\[Update of screenshot\]](#)

Field descriptions:

Statement of Account – Download Screen – General	
Party BIC*	This field requires the user to enter a party BIC. If the user is associated with exactly one party, this field is pre-filled with the BIC of the respective party. If the user is associated with more than one party, this field is not pre-filled. In this case, the user can enter the party BIC manually or search for it by clicking on the smart-select button and opening the Party Reference Data – Query Screen as a pop-up. Required format: 8 or 11 characters
Account Number	<p>This field offers the possibility to restrict the result list to an account statement by entering a specific account number.</p> <p>If the user only has one single account, this field is pre-filled with the account number of the current user. This value can be overwritten.</p> <p>If the user has more than one account, this field is not pre-filled. In this case, the user can enter an account number manually or search for it by clicking on the smart-select button and opening the Cash Account Reference Data – Query Screen as a pop-up.</p> <p>Required format: up to 34 characters – with the following additional restrictions to the input value:</p> <ul style="list-style-type: none"> • Must not start or end with a space, but may have space/s within the middle • Must not start or end with a slash • May contain slashes within the middle, but not more than one consecutive slash
Account BIC	<p>This field offers the possibility to restrict the result list to an account statement by entering the account BIC.</p> <p>If the user only has one single account, this field is pre-filled with the account BIC of the current user. This value can be overwritten.</p> <p>If the user has more than one account, this field is not pre-filled. In this case, the user can enter an account</p>

	BIC manually or search for it by clicking on the smart-select button and opening the BICs – Query Screen as a pop-up. Required format: 8 or 11 characters
Business Date	This field offers the possibility to select one business day to query the statement of account. The statement of account can be queried for the last 10 business days. <u>This field is not available for A2A parties.</u>

58 EUROSYSYSTEM UPDATE [SDD-CN-PBR-064]: page 399 (RTGS UHB chapter 5.1.24.12 Payment Return – New Screen – Return Chain)

SDD CN PBR-064 describes the changes in the GUI related to new customer credit transfers and payment returns due to EEA jurisdiction payments. The UHB has to be adapted accordingly.

Note: The listed updates will be incorporated into the first UHB version after the CSLD go-live.

PAYMENT RETURN – NEW SCREEN – PAYMENT RETURN – TRANSACTION INFORMATION – RETURN CHAIN – (INVOLVED PARTY) – PARTY	
<p>The user has the possibility to fill the input fields listed in this table for each of the following parties involved in the return transaction:</p> <ul style="list-style-type: none"> • Ultimate Debtor • Debtor • Initiating Party • Creditor • Ultimate Creditor 	
Name	<p>This field offers the possibility to enter the name of the respective party involved in the return transaction.</p> <p><u>If this field is used to identify the party involved in the return transaction, either the fields 'Town Name' and 'Country (Code)' or the field 'Address Line' in the underlying sub-section 'Postal Address' have to be filled.</u></p> <p>Required format: up to 140 characters</p>

59 EUROSYSYSTEM UPDATE [SDD-CN-PBR-060]: page 672 (RTGS UHB chapter 6.1.14 Download statement of account)

SDD CN PBR-060 describes the changes to the GUI access to the statement of account screen regarding A2A parties. The UHB has to be adapted accordingly.

Note: The listed updates will be incorporated into the first UHB version after the CSLD go-live.

Context of Usage

This use case describes how to query an account statement and download the result list based on the selected filter criteria.

U2A only parties are able to query statement of accounts for the previous ten business days while A2A parties are only able to query the statement of account for the last day.

[...]

[Infobox]

Pre-filled account and party information

If the user has only one single account, the ~~sections~~ fields 'Account Number' and 'Account BIC' are pre-filled with the account information of the current user. However, if the user is connected to more than one account (e.g. co-manager) both fields are not pre-filled. In this case, the user can enter an account number or account BIC manually or search for it by clicking on the smart-select button and opening the respective reference data screen as a pop-up.

If the user is associated with exactly one party, the field 'Party BIC' field is pre-filled with the BIC of the respective party.